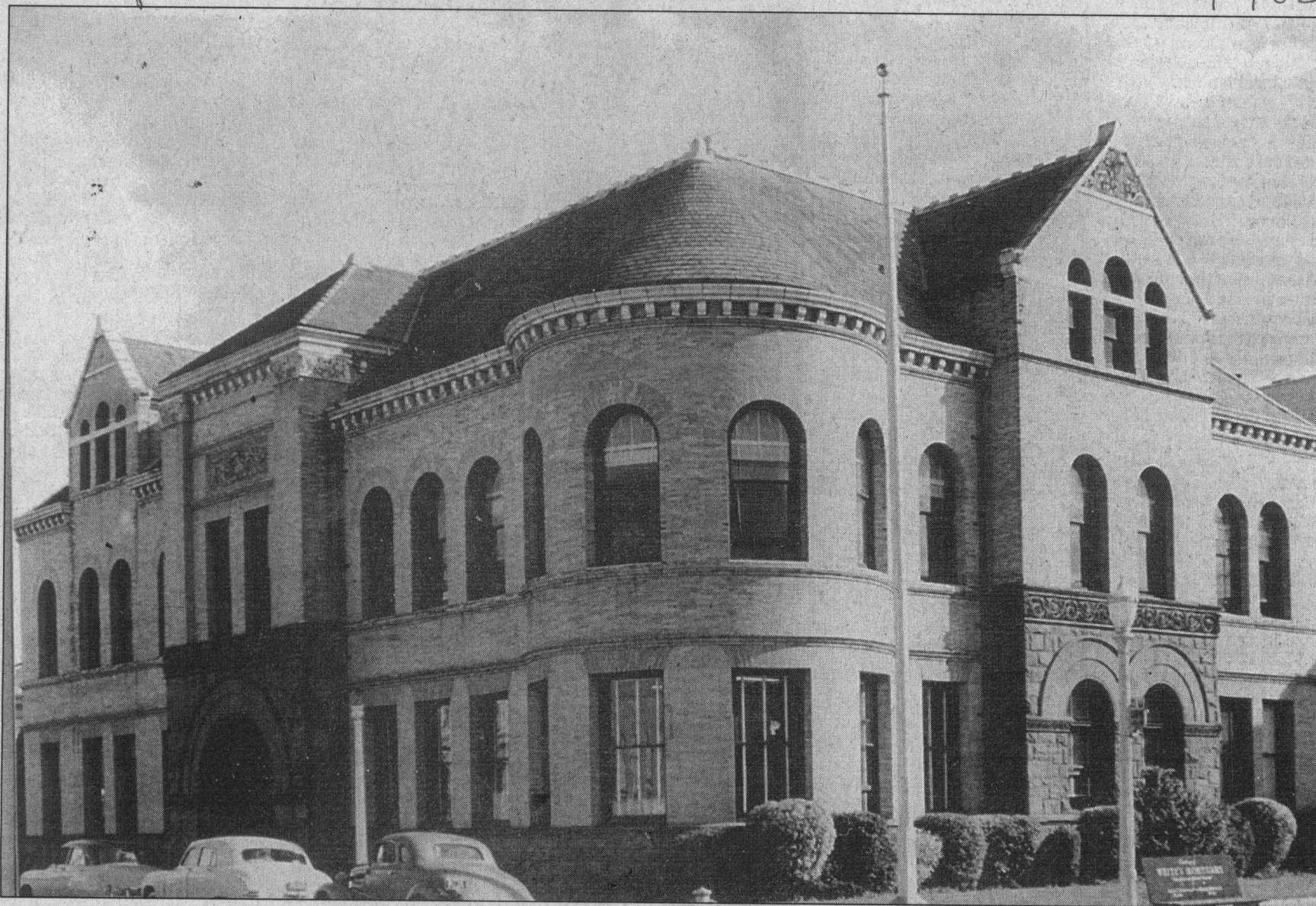


FOCAL POINT

Courthouse, Cooper House, gone

Cooper House

9.9.03



Covello and Covello Photography (Ed Webber Collection)

SANTA CRUZ — The County Courthouse on Cooper Street in November 1951. The building was later known as the Cooper House, and was torn down after sustaining damage in the 1989 earthquake. The photo is part of the Ed Webber Collection and part of the history series provided courtesy of Covello and Covello Photography and Capitola Museum historian Carolyn Swift.