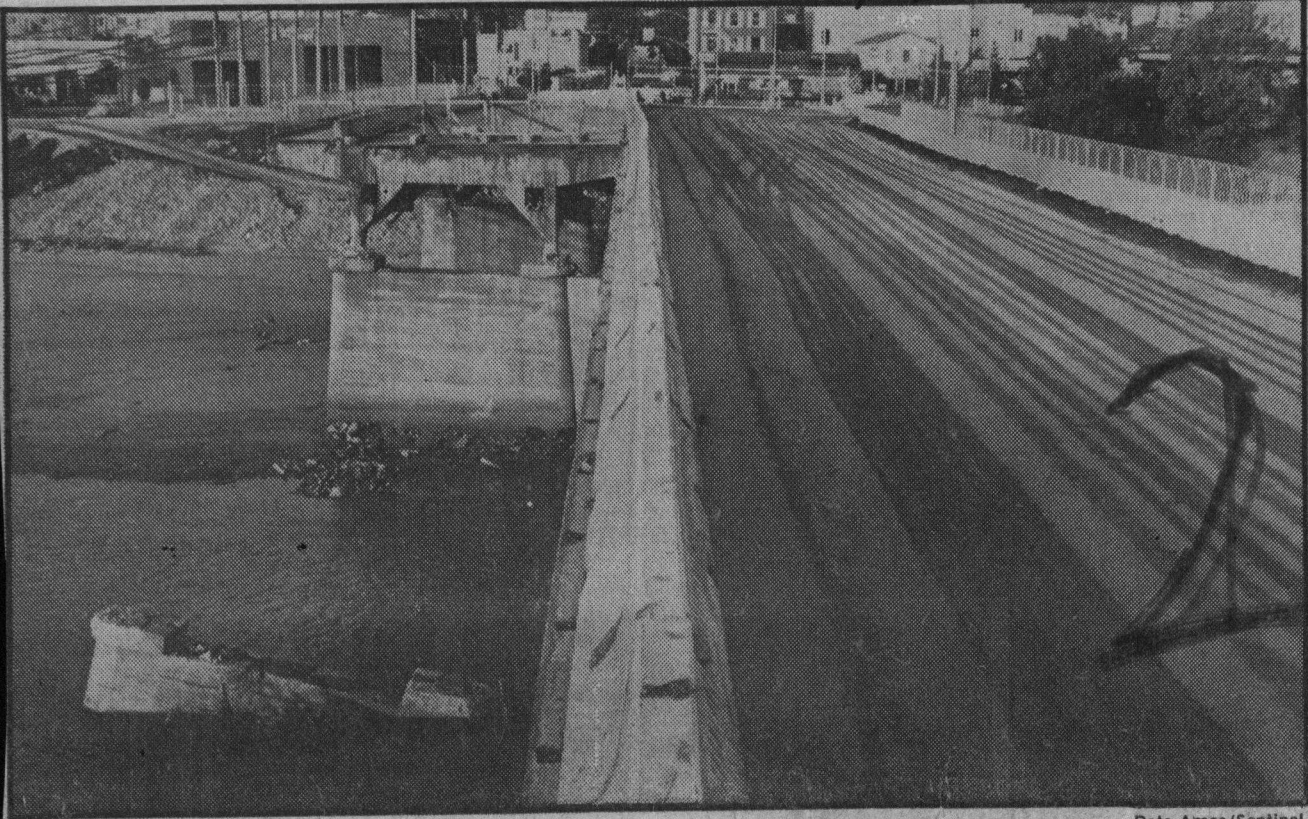


2/11/82 B.C. Sentinel



Pete Amos/Sentinel

## Soquel Avenue Bridge May Re-Open Saturday

Two lanes of the storm-damaged Soquel Avenue Bridge may open to traffic by Saturday, according to city officials. The bridge sustained \$1.75 million in damages during the Jan. 4 storm when logs and debris jammed against a pier supporting two spans, and the rushing waters undermined it

(left foreground). The damaged section of the bridge was built in the 1920s, according to Larry Erwin, assistant director of public works. The undamaged two lanes, which Erwin said were "structurally more sound," were added to the bridge in the late 1960s. The damaged two lanes will not

be restored until spring 1983, officials estimate. "We expect it to be fairly well congested with traffic," Erwin said, but he expects the downtown traffic situation to ease considerably when the two-lane, two-way bridge opens. "We definitely need this bridge back as soon as possible," he said.