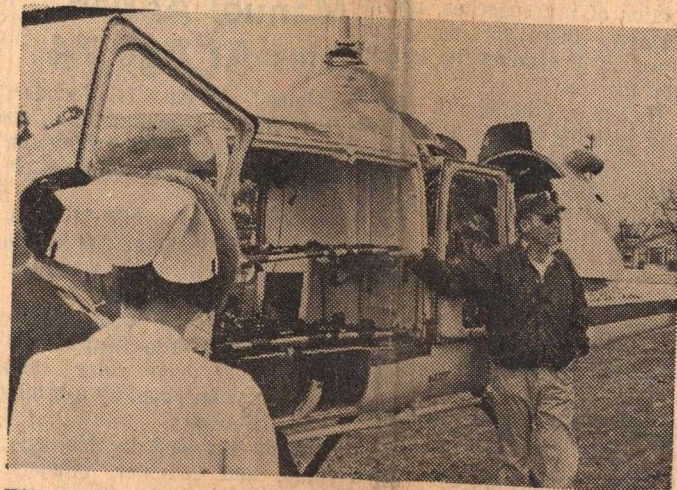


DOMINICAN'S YEAR

Continuing Study, Expanding Service, Local Participation

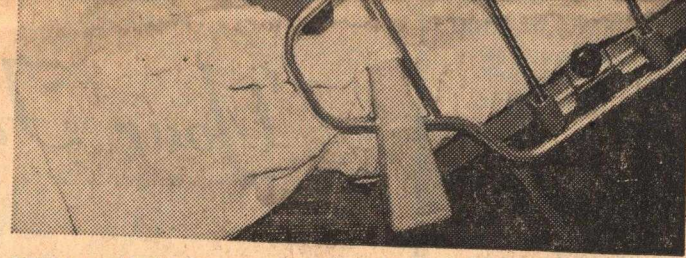
Dominican's year has been one of expanding service to the Community, continuing in-service training, and local involvement with concerned people in the Santa Cruz area who have devoted time and funds to the Hospital.



EMERGENCY — The new California Highway Patrol Helicopter Service to Hospitals rushes accident and rescue cases to Dominican. 24-hour In-Hospital Physician coverage, expanded Emergency Equipment, enlarged facilities — all indicate important developments this year.



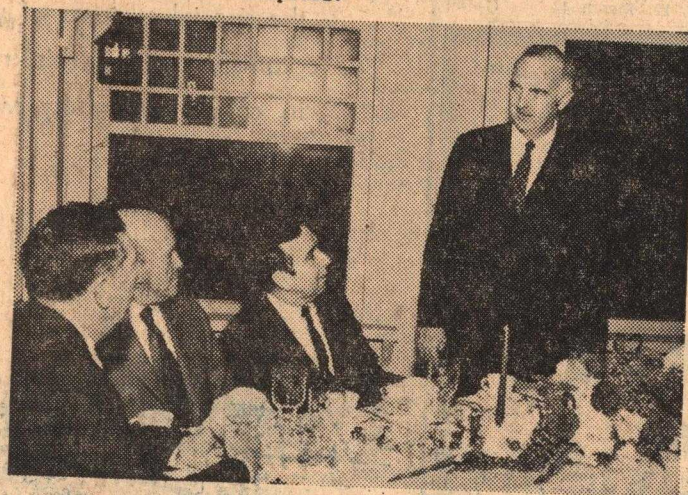
AUXILIARY — Women who want to help have always been part of Dominican. The 241 Auxiliary Members tour children through the Hospital on a regular basis. Pink Pinafores Ladies devoted 20,027 hours last year to time-consuming hospital tasks to relieve the busy staff.



STROKE CENTER TRAINING — Typical of what's been happening during Dominican's year is the new Stroke Center. The California Regional Medical Program made the Center possible, and the University of California and Stanford Medical Centers provide consultation services. In keeping with Dominican's policy of continuous study, S. Allan Dorosin, M.D., Neurologist; Program Coordinator, is instructing Nurses in a special course of training concerning the advanced medical treatment of stroke patients.



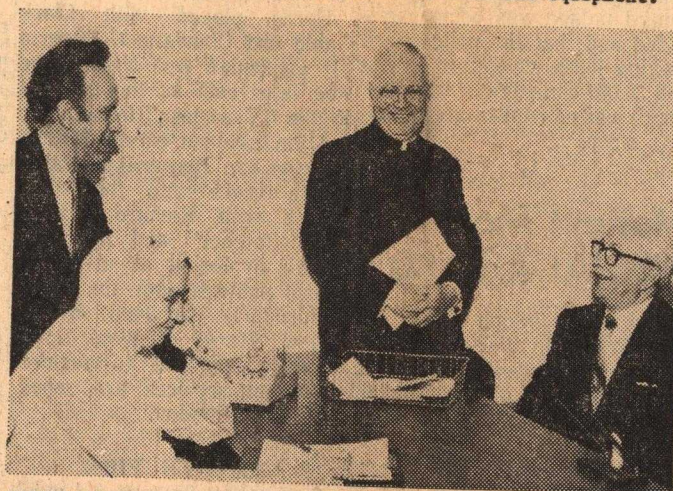
PERSONNEL TRAINING — Dominican Personnel Director Don Kelly held a 3-day University of Chicago Management Training Seminar for the hospital staff. It is the first step in a planned 5-year program of supervisory training within the hospital.



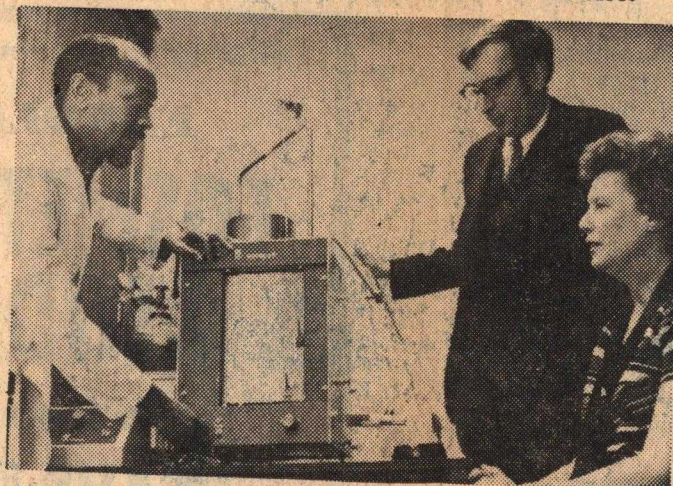
FOUNDERS — Thomas E. Tonkin, California Hospital Association President, speaks at the Founders' Club Annual Dinner. The Founders' generous support helped to build Dominican Hospital, their interest and aid continue as new growth and expanding services for the



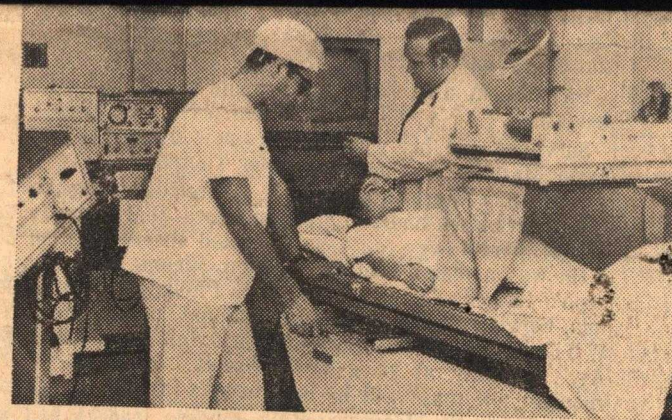
CRISIS INTERVENTION CENTER — An additional service this year is prepared to give special help in crisis situations. Floyd M. Estess, M.D., Director, guides the activities of the Center which includes a complete psychiatric staff with the full support of hospital services and equipment.



PATIENT RELATIONS — The Sister Visitor's full day includes: writing letters, a visitor's cup of coffee, contacting a Priest, Minister, or Rabbi when asked, plus all manner of patient services. Follow-up home telephone calls are also part of Dominican's extra care.



RESPIRATORY CARE — New equipment and expansion of the Cardiopulmonary Laboratory and Inhalation Therapy Service has had County Tuberculosis and Respiratory Disease Association support. Anthony Calciano, M.D., Director, TB Director Oliva van Engel, and Collis Harris, Inhalation Therapist, discuss the added services.



X-RAY — The Medical Television Chain X-Ray is another "first" for Dominican. This complicated, sensitive unit is capable of producing a clearer view of internal body structures. The equipment provides physicians with more information at greater speed.



MEDICAL CONFERENCE — Doctors, specialists in varied fields, gather at weekly luncheon conferences to discuss current medical developments and concerns. Dr. Georges McCormick, Dominican's Medical Director, feels the exchange of information is a vital part of Hospital operation.



SECURITY — In cooperation with Cabrillo College, young men enrolled in the Department of Law Enforcement and Corrections work regular shifts at Dominican. Under George Mitchell, Security Director, students provide a variety of Security Services needed by a modern hospital.

DOMINICAN



SANTA CRUZ HOSPITAL

1555 Soquel Drive, Santa Cruz, California 95060, (408) 476-0220