

# Dominican unveils mental health unit

By TONI COCCO

Sentinel Staff Writer

SANTA CRUZ — Lt.

Gov. Leo McCarthy was among the dignitaries Monday at the dedication of Dominican Hospital's new mental health building.

Dominican officials say the dedication marks the beginning of a new era in the treatment of mental health patients.

The program will provide treatment for both welfare and private patients under the same roof.

At the elaborate dedication ceremony, McCarthy and Supervisor Joe Cucchiara told the large crowd that the project had won the 1983 Outstanding Nominee Award in Sacramento at a meeting of the County Supervisors Association of California. It was named as the model of cooperative work in health and human services in the state.

McCarthy said the partnership between private and county health services "is a good statement of what's happening in Santa Cruz." He called the project "a remarkable thing in human terms."

He praised the crowd for its sense of community involvement in the hospital and its lay and religious leadership.

He reminded those present that the Catholic church does not contribute to the operation of the hospital, but that is run by a local board of directors and funded by local donations.

Bishop Thaddeus Shubsda of the Monterey Diocese performed the dedication ceremony, which was followed by tours of the building.



*The face of Dominican's new Mental Health Unit*

The new mental health building will open its doors Monday and will receive the approximately 15 patients now undergoing treatment at the county's Emeline Street neuropsychiatric ward. Officials say the ward will no longer care for patients on an overnight basis, but will continue to provide out-patient services such as group therapy and crisis intervention.

The new building will have five areas of treatment for patients in various levels of mental illness.

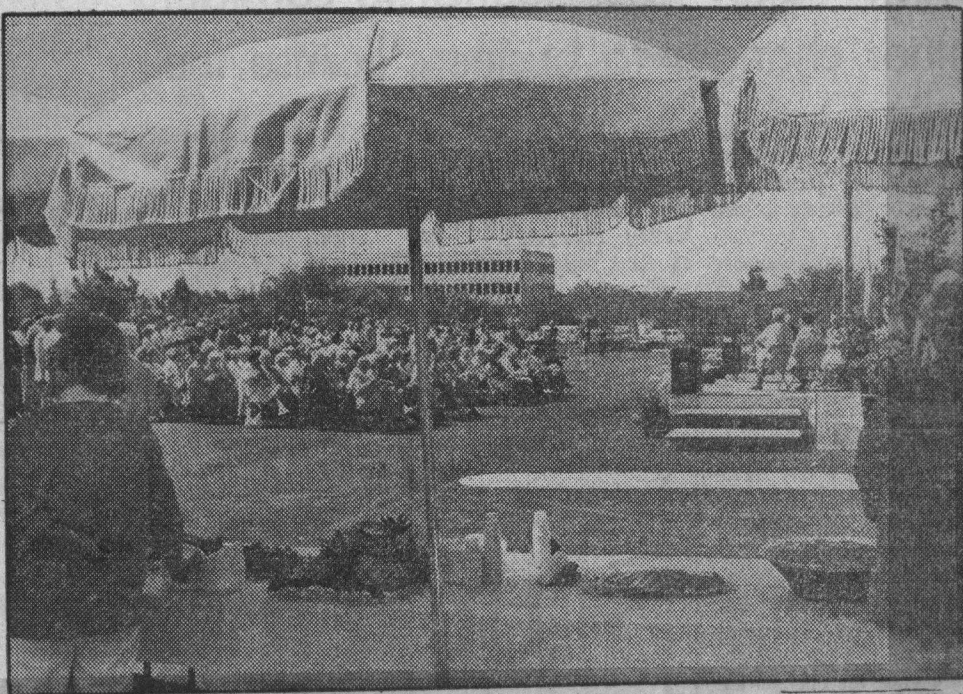
The new building can house up to 28, according to Wayne Boss, administrator for Dominican Hospital, and may be expanded to 50 beds in the future, depending on the needs of the community.

Staff for the new mental health building will include Ken Koenig, mental health services director; Sister Helen Schill, special services director; Mary Haack, mental health department manager; and psychiatrists Andrew Kumasaka, from the Emeline Street neuropsychiatric ward and Paul Luther from Harbor-UCLA Medical Center in Torrance; and psychologist Greg Katz from the neuropsychiatric ward on Emeline Street.

Officials present at the dedication expressed the hope that the new mental health building will attract psychiatrists to the Santa Cruz area, because private patients will no longer have to be sent to San Jose for prolonged treatment.



*Bishop Thaddeus Shubsda*



*A big crowd attended dedication.*

Pete Amos/Sentinel