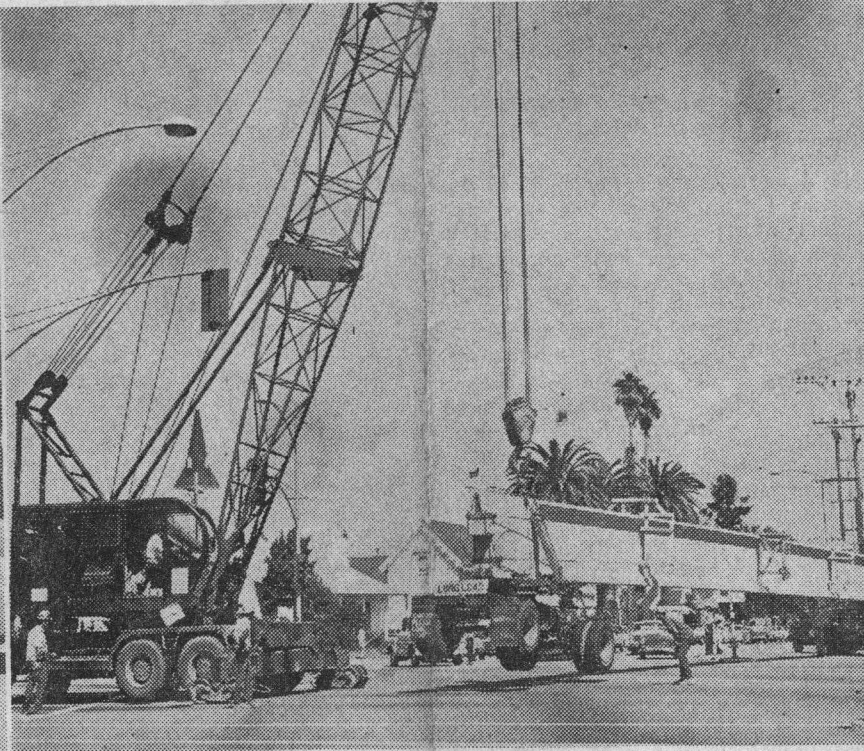


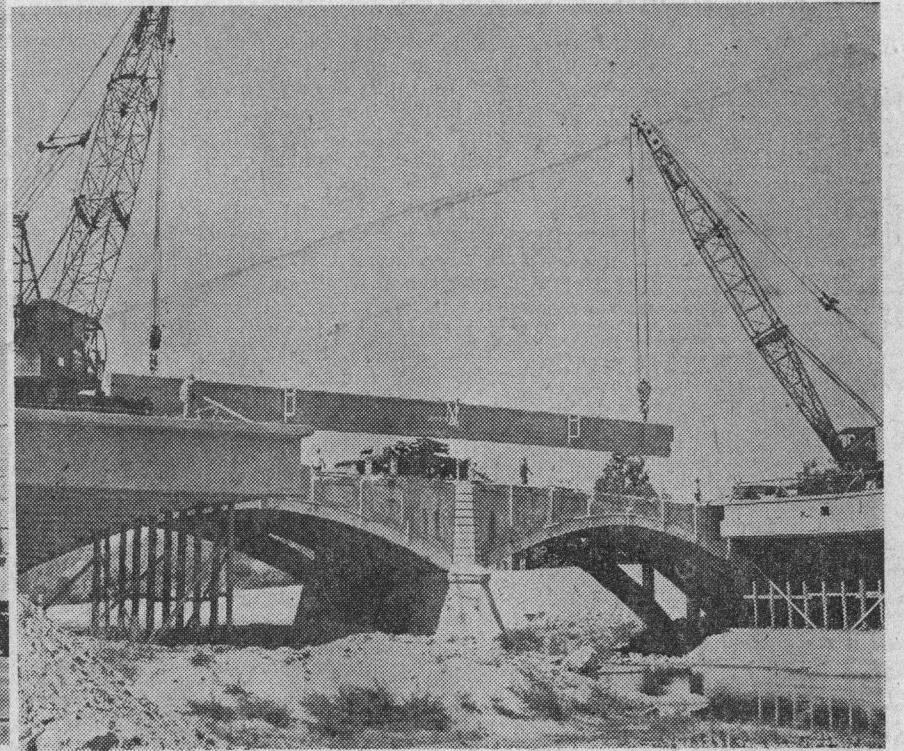
Giant Girders Arrive For Water Street Bridge



A massive moving job began Friday as the first of more than a score of prestressed concrete bridge girders arrived in Santa Cruz. Parked in the right lane of the Highway 1 freeway connection to Mission Street, it turned heads of motorists blocked up at the intersection. (Photo at left). For an idea of its size, count the number of cars next to



it, beginning with the second car at the light. A total of three girders arrived and were placed on the bridge. Upsy-Daisy cornering technique was used to maneuver the girder around the intersection onto Mission Street. (Center photo). When the truck and "trailer" couldn't make the turn, a derrick was called to hoist the rear of



the beam and the truck wheels it rolled on. The Bigge moving firm first tried the Ocean Street-Water Street intersection before backing up to Mission, but it didn't fit there, either. Beams were trucked down from San Francisco across Highway 17. Ahh—rest at last, as the 110-foot long girder is gently placed in "bed" between the approaches to the Water Street

bridge. (Photo at right). The beams have a notch in their ends that rest on the bridge abutments, allowing a certain amount of stretching. Similar beams will be placed at the Laurel Street bridge, which is almost a twin of the Water Street bridge in design. Edwards-McCammon Company of Santa Cruz is constructing the bridges, which are due for completion before the end of the year.