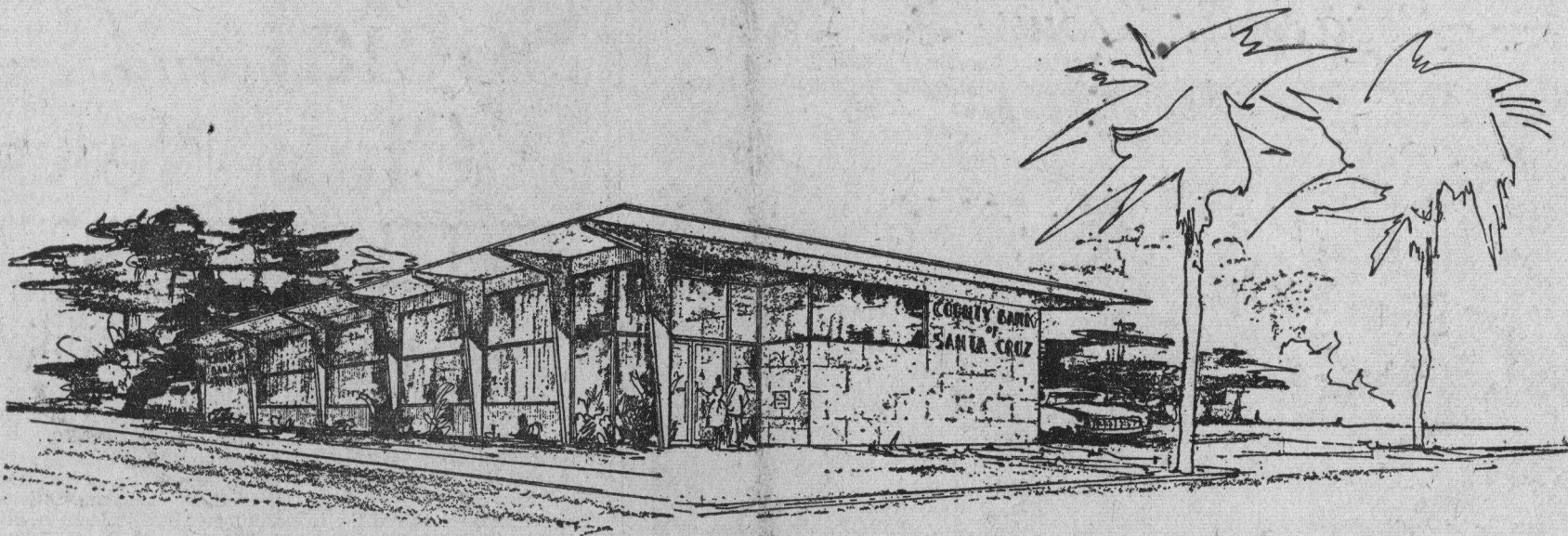


Plans For West Side County Bank



Above is an artist's drawing of the proposed West Side branch of the County Bank of Santa Cruz. Bids for the bank office will be opened February 18. The 4500-square-foot structure will be located on bank-owned property at the corner of Mission and DuFour streets. If a bid is awarded, the bank is expected to be ready for occupancy by July. The building was designed by Ronald A. White of Beverly Hills. There will be a drive-in teller's window on the obscured side of the building. Palms shown in the drawing exist on the site and will be spotlighted at night.

Massive Changes In U.S. Labor Force During 1960's

By Sterling F. Green

Washington (AP) — Rapid and massive changes in the labor force in the 1960s will require the abandonment of job discrimination based on race, age, sex and color, Secretary of Labor James P. Mitchell said Saturday.

can support a 50 per cent gain in production, Mitchell said. That would mean a 750-billion-dollar output in 1970, compared with a recent rate of 485 billion.

Hinted at, but not directly discussed in the comprehensive

lion new young workers and 3 million women will enter the labor force, some 40 per cent more than during the 1950s. Only 15½ million older workers will die, retire or stop working for other reasons.

with the startling
er workers,
tual decline
ber of work-
between 35
from which
es and su-
drawn