

Due To Open In November

County Bank Starts East Cliff Branch Construction

City, county and bank officials, together with community leaders, took part yesterday in groundbreaking ceremonies at East Cliff Village shopping center in preparation for the construction of a new County bank office. It will be the eighth in the bank's series of Santa Cruz county offices.

Officiating for County bank was R. J. Seller, president. He said the construction of the bank's new building would begin at once, with completion scheduled for late October. Occupancy is expected by early November.

The new County bank office will have a floor space of ap-

proximately 3000 square feet, plus exterior porch areas.

Styling will conform to the conventional East Cliff Village early-California architecture of baked adobe bricks, weathered 100-year-old pine and fir timbers, and tile roofing, to lend an early-day atmosphere to the completed struc-

ture.

Continuing the County bank policy of fitting bank facilities to community needs, the new office will supply banking facilities to the fast-growing business, residential and resort area surrounding the two-year-old East Cliff Village shopping center.

An added stimulant to the selection of the East Cliff site is the scheduled opening of the Santa Cruz harbor, with a present target date of September 1.

Following bank policy, the new County bank office will provide complete banking services for patrons in the mid-county beach and cliffside area.

County bank will be the first of three new tenants to occupy the new East Cliff Village unit. Two structures will be incorporated into the free-standing County bank building, with leases to both now being processed.

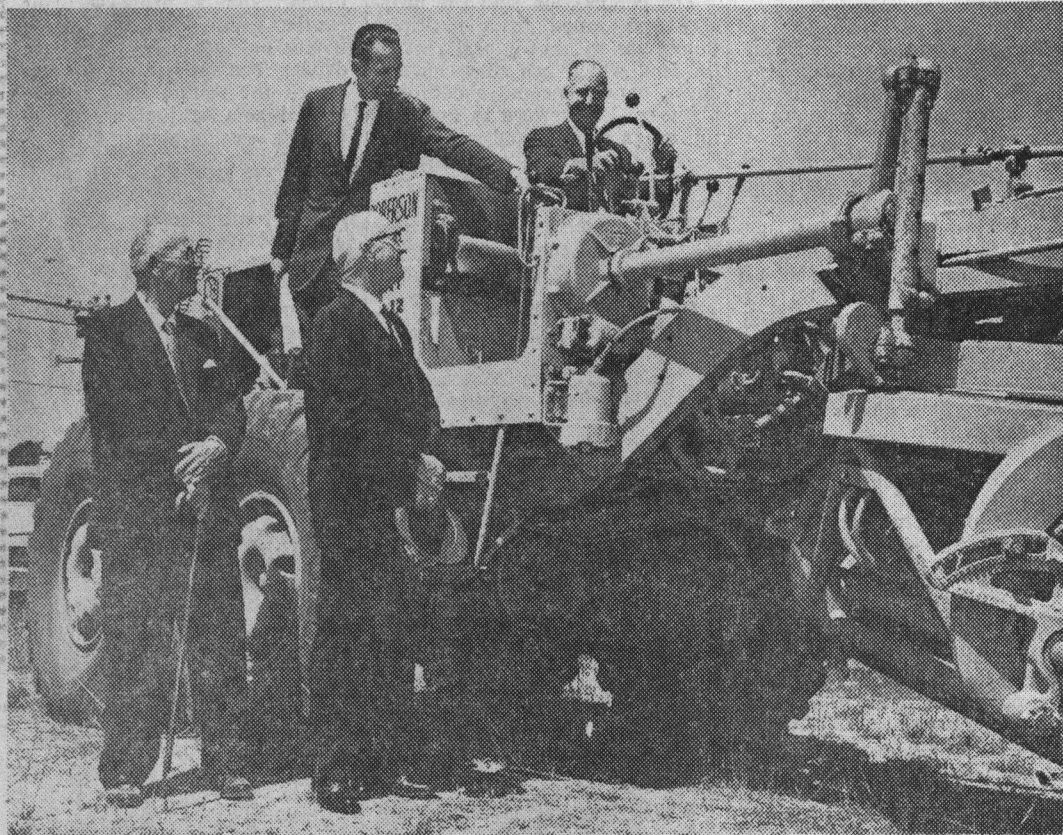
The names of the new occupants are soon to be announced, according to George M. Thompson, president of East Cliff Village, Inc., owners of the shopping center.

The overall East Cliff Village site is comprised of 18 acres, with some eight acres already developed. The new County bank office will be the first to occupy the new unit which will be located on the westernmost end of the center.

Historically, the site was part of the original Rancho del Rodadero land granted in 1834 to Francisco Rodriguez.

Rabbi Lazowick Officiating

Rabbi Maurice Lazowick of Los Angeles will officiate



County Bank and East Cliff Village officials get a grader in motion for a new branch bank in the Live Oak shopping cen-

ter. Atop the machine are, standing, H. E. Camping, East Cliff Village vice president, and Ray J. Seller, bank president.

On the ground are, left, George M. Thompson, East Cliff Village president, and J. J. Johnson, bank board chairman.