

Drug traffic is streaming through county, sheriff says

By JOHN McNICHOLAS
Sentinel Staff Writer

SANTA CRUZ — This county is "rapidly becoming the West Coast port of entry for drugs," says County Sheriff Al Noren.

Noren made that comment to the Ben Lomond Town Association Wednesday night, but this morning declined to comment on the amount of drugs he suspects may be landing here, how they are getting here, or how much money they may be worth.

"We're talking about heroin, cocaine and marijuana, but I really don't want to comment on how it's getting in here or how we know it's coming in here. We know drugs are coming in. Intelligence tells us that."

"The federal government has put a tremendous amount of effort and pressure on the East Coast," Noren said this morning, "and there's a switch on the part of the smugglers and importers to use the other side of the country. I think that has a great deal to do with it."

Noren also said he doesn't "believe it's in the cards that the U.S. government is going to be giving some of the South American countries an ultimatum about the drugs."

A 1982 report by the sheriff's office shows during that year deputies seized 6.3 kilograms of cocaine in this county — about 14 pounds — half a kilo of hashish, 79 grams of heroin and about a kilo of opium, for a combined

street value set at slightly more than \$1 million. Of marijuana grown here, deputies seized 181 pounds of dried sensimilla marijuana and 5,612 plants under cultivation, with a value of some \$11.5 million.

Noren said this morning "a lot of people are buying property here," implying the purchases were related in some way to the drug trade.

"We know from intelligence a lot of crime is being committed and not reported," such as drug ripoffs, he said. He would not say how many ripoffs his department suspects have occurred recently.

He also said "certain types of

smugglers" are living here on parole. He did not say if they were still active.

He said "if a guy can do a whole lot of small amounts, he doesn't have to do pounds to make him a big dealer. K-mart doesn't sell large amounts of expensive items, but they do a pretty good business."

He said he is concerned that attitudes in the community and state condone drug use.

Referring to "Rose Bird and the Supremes," Noren told the Ben Lomond residents "the attitude of the

SEE BACK PAGE

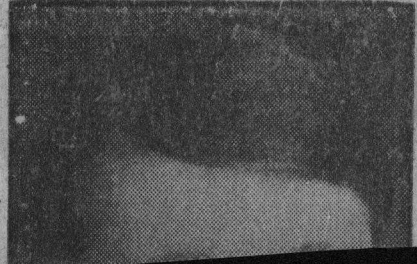
Navy commander

5.26.83

U.S. adviser slain in San Salvador

SAN SALVADOR, El Salvador (AP) — A gunman pumped four bullets into the head of the deputy commander of U.S. military advisers in El Salvador as he sat in his car waiting for a woman friend on a university campus. He was the first U.S. adviser slain in this nation's civil war.

Navy Cmdr. Albert A. Schaufelberger was killed Wednesday



Black warned that local customers

Drug traffic—

FROM PAGE 1

judiciary toward drugs has caused me considerable concern."

He cited a "gradual diminishing of parental involvement with youngsters.

"It used to be if we cited a (youngster) for possession of alcohol, the parents were usually relieved and said, 'Thank God, he's not using dope.'

"Now, if we cite a youngster for marijuana, the parents are thankful their (child) is not using the hard stuff.

"I think you have an attitude change in the community."

Noren wouldn't estimate how much money moves through this county in the drug trade.

"With a lot of these things, it's hard to put a dollar figure on. But I'm convinced there is a real problem here in Santa Cruz County. I'm not trying to be an alarmist, but facts are facts."

Sentinel Staff Writer Joan Raymond also contributed to this report.

much a

He the \$23 at about

Show petition would be those a

"We er tele hearing mended given l compet

"If t continu mission we get

The its new they co business Black s

While Telepho the new telepho rate in given s service.

Even pected t high as