

## Sentinel Of The Ages . . . Sequoia Sempervirens



Given by Santa Cruz county as a perpetual monument to the Los Angeles County Fair association

at Pomona is the redwood giant pictured above in the woods of the Locatelli ranch near Boulder Creek. Leaning on a woodsman's

ax surveying the ancient tree from a vantage point is Logger Merv Hartman.

## Mighty Monarch Ends 2000 Year Reian



# County Furnishes Giant Redwood For LA Fair Monument

Before an audience of thousands upon thousands of visitors to the Los Angeles county fair, which starts Friday, a giant redwood tree trunk from Santa Cruz county will be transformed into the heroic statue of a Spanish-California Don. The statue, to be executed by John E. Svenson of Ontario, well known sculptor and wood carver, will remain as a permanent monument on the grounds at Pomona.

When the idea of the statue was first conceived, an appeal went out for a redwood log. It must be live timber of suitable dimensions. The board of supervisors of Santa Cruz county and the Santa Cruz County Advertising committee responded by selecting a tree from the famed redwood area near Boulder Creek. When cut, it measured 6½ feet in diameter, 21 feet in length, and weighed 17½ tons.

Actually, securing the giant redwood wasn't as easy as it sounds. Disappointed in several quarters in their search for a big tree, County Advertising Committee Members George Cress, Fred D. McPherson Jr., and Skip Littlefield, along with Supervisors Phil Rowe and Gus Wahlberg, tossed the problem into the laps of the Locatelli family at Boulder Creek.

Spearheaded by Vincent, Frank,

and Ernest, the Locatelli clan spent the Labor Day holiday week-end falling the huge timber and bulldozing a road out of the mountains.

The first leg of the tree's journey to Pomona was over two miles of rough logging road, a considerable portion of which had to be bulldozed to make it passable. Then came the 400-mile journey to Pomona.

The log contains 7804 board feet of lumber, approximately the amount needed in a two bedroom home.

Throughout each of the 17 days of the fair, Svenson will be busily engaged in the novel task in the open air where his work can be watched by all fair visitors. The completed figure will be 14 feet tall with other measurements in proportion.

The log will be securely fastened to a concrete platform which will serve as the base of the statue. Svenson will work from a three foot plaster model which will remain beside him so that the audience will be better able to visualize the finished figure.

After the statue is finished, a bronze plaque at its base will bear the legend, "From Santa Cruz County — Home of the Redwoods."

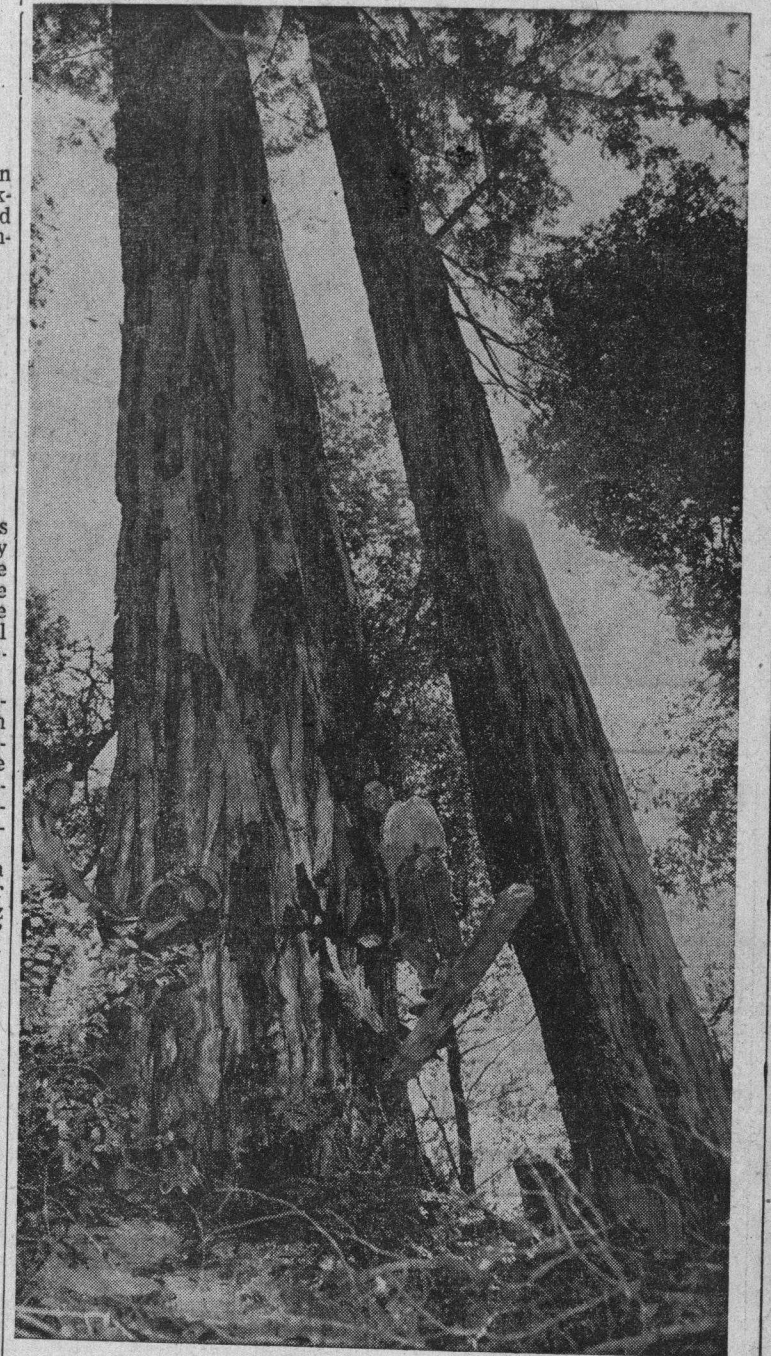
## Time Out For Picture



Merv Hartman on the business end of an eight-foot power saw allows that the next move is up to Frank Locatelli with the sledge hammer as work proceed-

ed on the cutting of the tree which was shipped to the Los Angeles county fair grounds at Pomona last week.

## Your Move, Mr. Locatelli



## Supernatural Mike O'Brien

W  
C  
E  
obe  
Said  
n  
and  
r  
ent  
le  
d  
al  
n-m  
kms  
celas  
Pr  
an

El  
Pa  
Ra

Lo  
com  
on  
prais  
sessi  
tion.

"In  
thous  
pitals  
their  
Jones,  
declare

The  
said  
mobile  
in the  
Vince  
bara, st  
over th  
today.  
been r

F  
S  
F  
S



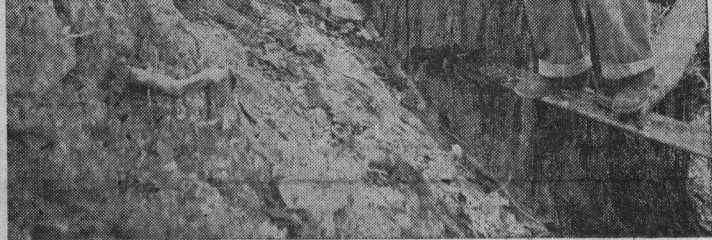


"Timber" — the once familiar cry of Boulder Creek loggers rents the air—as a mighty mon-

arch ends a reign of more than 2000 years.

♦ ♦ ♦

When cut, the tree measured 6½ feet in diameter, 21 feet in length and weighed 17½ tons.



Pausing briefly for Photographer Ed Webber during falling operations are, left to right, Frank Locatelli, Geo. D. Cress of

the Santa Cruz county advertising committee and Vincent Locatelli.

♦ ♦ ♦

## American Defense Can't Be Secret

Washington — the Treaty of Commerce yesterday the H-bomb "too high" being on

Address of the D. phrey de careful spending tion is model" the most sible co

"It is work a he said by pu chrome to have

He co the lang ense W the for will do give him

Meant "There estimat

Ci