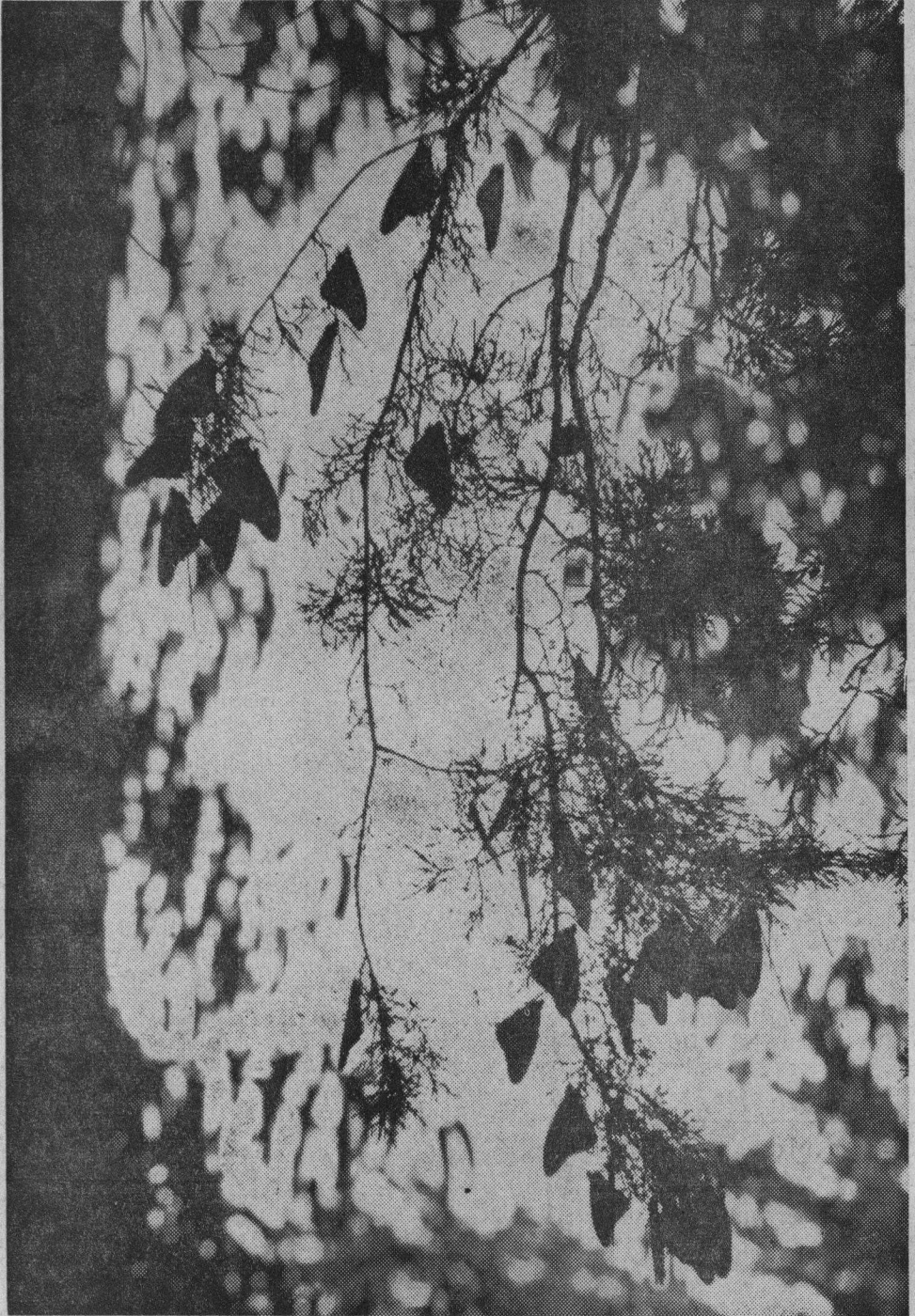


The Monarchs Return



The Monarch butterflies, stopping off at Santa Cruz on their annual migration from Alaska, have created wondrous displays on the eucalyptus trees around Santa Cruz this season. Clustering sometimes in the thousands, the migrants have been report-

ed to cover the topmost branches of many trees in the area. In the photograph above by Pete Amos, the delicate butterflies cling like leaves to a tree in the yard of the Santa Cruz museum on East Cliff drive.

◇ ◇ ◇