

WEATHER — Temperature for 24-hour period ending at 8 a.m. today — Maximum 58, minimum 54.

Monterey Bay Area: Rain tonight and tomorrow, heavy at times; southerly winds 20-35 m.p.h. with small craft warnings probably continuing tomorrow.

SANTA CRUZ SENTINEL-NEWS

Serving San Cruz County Since 1856

Guaranteed Paid Circulation
of The Sentinel-News yesterday was

12,484

MISSED PAPER? If you phone
GA 3-4242 before 6:30 p. m. a special
messenger will deliver Sentinel-News
to you if you live within city limits.

100th Year—No. 302



SANTA CRUZ, CALIF., THURSDAY, DECEMBER 22, 1955



5c

Sunday and Daily
Excepting Saturday

TWENTY-SIX PAGES

Flood Waters Threaten Lowlands

North Is Drenched By Floods

San Francisco (AP).—Torrential rains drenched northern California today in a disastrous continuation of Pacific storms which caused flood emergencies in several counties.

Fast rising rivers — including the Russian, Eel, Klamath and Sacramento—were on a rampage, blocking highway travel, disrupting communications and causing the evacuation of 10 communities. The worst was yet to come, the weather bureau indicated. It forecast "continued heavy rain." The bureau said:

"We cannot promise that the storm will be over by Christmas."

Weathermen said the disturbance off the coast, which has brought tremendous downpours to northern California and the Pacific Northwest, is causing storm centers to move in at intervals of 12 to 24 hours.

"The heavy rain and mild temperatures are due to the fact that the wind flow over the Pacific is from the southwest, bringing semi-tropical and very moist air to California," the bureau reported.

The Russian river burst out of its hill gorges some 70 miles north of San Francisco and poured into the low-lying resort areas containing the towns of Guerneville, Hopland, Healdsburg and Geyserville. It was declared a disaster area.

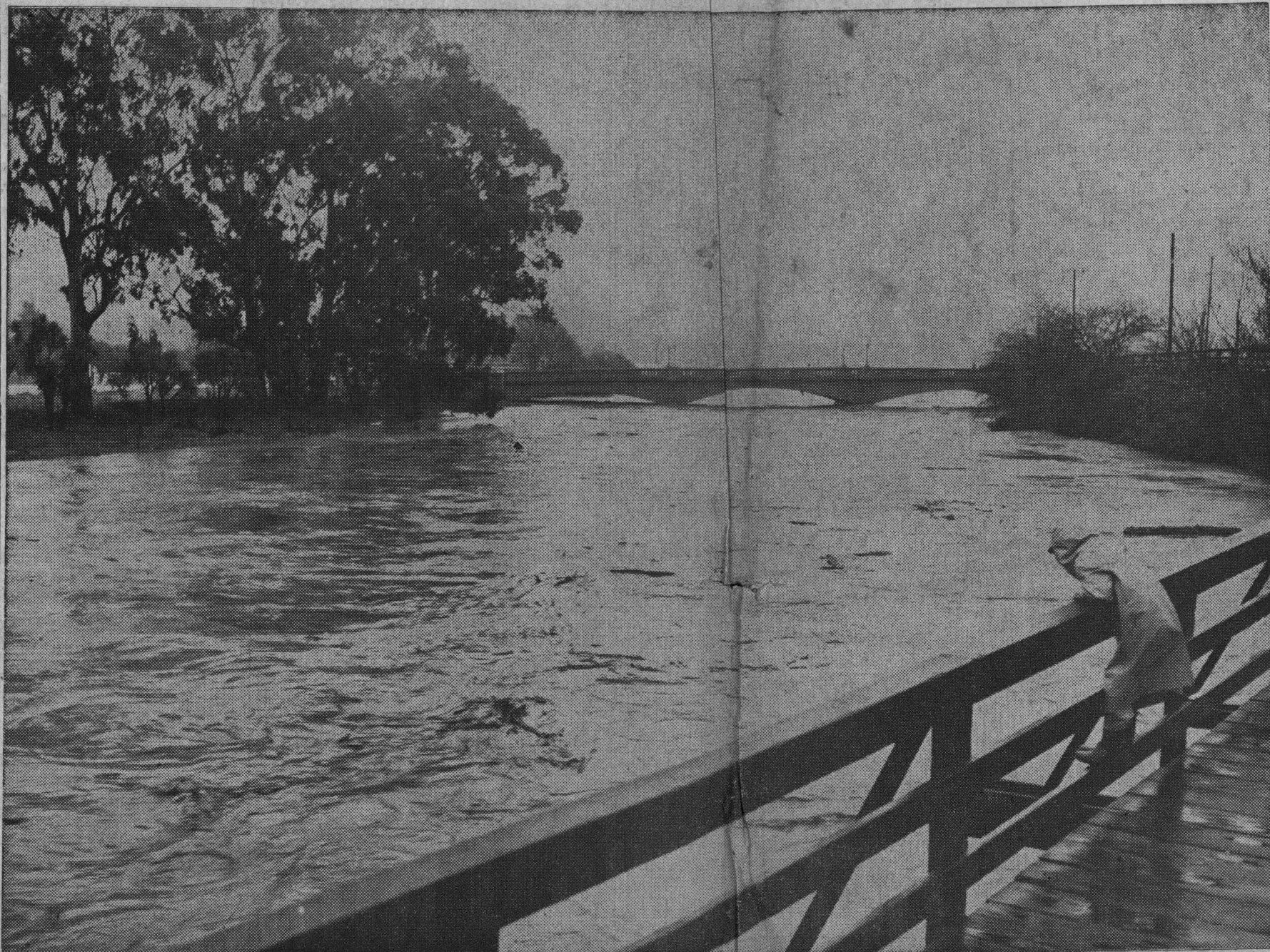
Flash floods isolated a number of families north of Guerneville.

Civil Defense Director Gilson Willets asked the air force for helicopter and the army for ducks to remove residents of river bottom areas in the ten mile strip above and below Guerneville. Hamilton air force base dispatched a helicopter from the 41st air rescue squadron to work out of Sonoma county airport, north of Santa Rosa.

Lake county to the north was isolated so far as highway travel was concerned. Slides blocked the roads which high water already had not made unusable.

Seven hundred residents of the town of Upper Lake, ten miles

Surging San Lorenzo Closes At Riverside Bridge



Jerry Webber, son of Chief
Sentinel-News Photographer Ed

river rise to flood level after
five days of rain. This picture

Some Areas Already Under Water; More Heavy Rain Forecast

Definite flood threats to the lowland areas of Santa Cruz were a startling reality today as California's worst storm of the season nearly drowned the coastal areas.

A moderate high tide at 4:36 o'clock this afternoon posed the next climax, but unless there is a change in the weather a 5.1 foot tide at 4:53 a.m. tomorrow morning could cause the most severe damage.

By 1:30 the river level was down to 10 feet and unless the rains increased the total flood danger was lessening momentarily.

At noon today it was still raining, but not as heavily as during the early morning hours. Kenny Gleason at Boulder Creek said the heavy rains died down by mid-morning although there was no signs of clearing weather.

Already the lowland areas of the city were flooded although the Ocean-Barson-Riverside area was still comparatively dry and the San Lorenzo was not threatening to wash above Laurel street extension as it did in the disastrous flood of 1940 which inundated lower Pacific avenue.

The weatherman was no help: The 8 a.m. forecast for the Monterey bay area was: "Rain tonight and Friday, heavy at times. Southerly winds 20-35 mph with small craft warnings until 8 p.m. and probably continuing Friday."

Southerly winds would worsen tidal conditions and slow up the flow of the river waters, one of the real dangers of the flash floods in the San Lorenzo.

City crews were all on emergency status with men grabbing a few hours sleep "now and then." Street Superintendent Don Bruce had all available men at work during the night and this morning.

At Boulder Creek, the San Lorenzo was pouring over the dam and veteran observer George Cress said the river was within four inches of as high as he had ever seen it there. It rained more than four inches at the valley community during the night while in Santa Cruz rainfall was 3.28 inches at noon.

In the early afternoon the city's position was damaging, but not critical. It has been much worse, but continued rains, high tides and wind posed a threatened emergency that could mean the evacuation of homes and severe

bed and finding her feet covered by water.

Don Adams, employee of the Capitola garage said there was about a foot of water covering the floor during the peak. The office of Dr. D. S. Sedgwick across from the garage also was flooded. The flooded area of Capitola avenue included area from Stockton avenue to the garage.

Bergthold said Soquel creek was right up to the rim. A log jam was reported building up at the Soquel bridge on Soquel drive about 9:30 o'clock, which if left unchecked could put more flood pressure on the creek.

All available crews in the county road department were working on 36 emergency calls which have reached Road Commissioner Fred Pracht since 3 a.m. this morning.

Some of the more serious conditions were: Bridge out on Merck road near Watsonville; flooded area near Hill Top road, and the Old San Jose highway; landslide on Branciforte drive, between Glen Canyon road and the covered bridge; a culvert in Sea Cliff state park washing out; slide at the top of Graham Hill road causing an extreme traffic hazard.

It also was reported this

north of Clear lake, took refuge in the grammar school when four to six feet of water flooded the town. Two creeks which converge at Upper Lake—Clover and Middle creeks—made the place uninhabitable. It was the worst flood in the county since 1937.

People forced from their homes were in no immediate danger. They had adequate food and medical supplies.

Weather Observer Joe Butner at Guerneville said the Russian river reached a stage of 26 feet at 4 p.m. today and was expected to reach 46 feet by noon. Flood stage is 30 feet.

The 46-foot level would flood the Guerneville business district—the first time since 1940 that has happened.

Guerneville is a vacation town of around 5000 population, 60 miles north of San Francisco.

The weather bureau warned that "continued heavy rain makes it likely the flood in the Russian river area will approach or equal the record flood of February, 1940," when the river reached a record 47 foot level.

Home Burns To Ground In \$10,000 Fire

In a downpour of rain early this morning a six-room frame home was destroyed by fire 10 miles northeast of Soquel, causing an estimated \$10,000 loss.

The residence of Mr. and Mrs. Roger Wicht was burned to the ground in a two and one-half hour fire that was discovered at 2 a.m. by the owner.

At the present time the Wichts, who have two children, are living with Roger's brother on the Old Stetson road.

William Twitchell, a driver with the Soquel station of the state division of forestry, said that "it was one of the worst fires I have ever seen." Cause of the fire is undetermined. Twitchell said that it started from the inside of the home.

The young family returned home at 2 a.m. today and found their home burning. Wicht told Twitchell his family had been to a church function. Later the Soquel forestry division crew arrived on the scene. The heat from the fire was so intense that an adjoining building almost caught fire, the driver said.

The department worked on the fire until 5 a.m.

Index

	Page
Amusements	8
Classified Section	10-11
Comics	9
Cooking Cruise	16
Editorial Features	13
Food Section	15-26
Junior Editor	13
Markets	12
Radio and TV Programs	8
Society, Club News	3
Sports	7
Vital Statistics	12

Webber climbs the Laurel street river walkway to watch the waters of the muddy San Lorenzo

ing.
(More Flood Pictures Page 12)

Subpoenas Shower On County Along With Heavy Rain

A storm of supoenas fell with the showers of the past 24 hours on rain-soaked and controversy-rocked Santa Cruz county as both sides in the Jehl-Miano conspiracy case sent process-servers on the trail of no less than 42 prospective witnesses.

Most of the subpoenas were returnable at the Jehl-Miano trial which opens January 4 but some were for the accusation trial of District Attorney Charles L. Moore, which gets under way January 19.

The attorney-general's office yesterday handed Santa Cruz police and the sheriff's office 17 subpoenas returnable at both trials. Nearly all were reported served by this morning.

Raymond Callaghan, Raymond Jehl's defense lawyer, said his process-servers were in action throughout the county today, seeking 25 potential witnesses. "Nearly all of them are important, too," Callaghan said.

In addition, The Sentinel-News learned, the state was subpoenaing additional witnesses outside the county, including at least one person in San Francisco and the grand jury auditor who went over the district attorney's financial records before the accusation of misconduct was returned against Moore November 16.

As the state and Jehl's defense made final preparations for next month's court battle, these additional developments appeared:

1—Moore's chief counsel, Melvin Belli of San Francisco, demanded that Assistant Attorney General Clarence Linn retract a statement casting doubt on Moore's financial honesty. If Linn refuses, Moore might sue for libel, Belli hinted. "Just more of the stuff they have in circus rings," was Linn's dry reaction.

2—Linn, in Santa Cruz yesterday to introduce B. Abbott Goldberg, the deputy attorney general assigned to advise Moore's undermanned staff, re-questioned two prospective witnesses last evening at police headquarters. After declining to identify the quizees, Linn returned to San Francisco with Goldberg.

3—Moore said he would ask Superior Court James Leo Atteridge's opinion on the sufficiency of an affidavit supporting his request for a subpoena naming Grand Jury Foreman Carlyle Blodgett. Turned down last week by County Clerk Tom Kelley when he tried to get seven subpoenas, Moore said he would bypass Kelley and seek Atteridge's opinion on the Blodgett subpoena as a "test case."

City detectives last night served subpoenas returnable at the Jehl-Miano trial to the following:

Moore: Glen Lundeen, operator

of the East Side tavern, 1007 Soquel avenue; Stanley Pillsbury, an employe of pinball distributor Sam Miano, Jehl's co-defendant; Police Chief Al Huntsman.

Former Deputy DA's Warren Thornton and Dick Pease; Alice Santos, an employe of the DA's office; and Sam Miano.

State subpoenas for both trials were served on former Chief Assistant DA Mel Dykman; Barbara Sims, currently Moore's secretary; and William Lenson, chief driver examiner for the local office of the state department of motor vehicles.

Out-of-town subpoenas were to be served on R. C. Wiltshire Jr., the grand jury auditor, and Jinx Rush, Moore's former confidential secretary who left the county last month. Mrs. Rush is employed by a San Francisco law firm following her departure from the employment of Belli.

Callaghan, whose client, Jehl, is accused with Miano of conspiring to set up a county-wide pinball protection racket, said his agents were serving 25 subpoenas throughout the county today. He wouldn't identify the recipients today because he was not certain all had been served but he "will be more than glad to" when he is informed all 25 have been reached, Callaghan said.

Callaghan charged anew that his client is being framed, saying the indictment of Jehl was motivated by "a mad desire to get at Mr. Moore through Jehl."

One of the charges against Moore is that he permitted Jehl to use his unofficial connection with the DA's office to set up the asserted conspiracy.

Besides the 14 subpoenas served by city detectives, sheriff's officers were given state subpoenas for Charles Mutchler, former "chief special investigator" for Moore; Danny Maracevich, Watsonville card room operator; and County Auditor George Kriz.

It is believed Kriz, like Grand Jury Auditor Wiltshire, will be called on to testify concerning alleged wrongful overtime payments made by Moore out of his secret investigation fund.

Belli's demand for a Linn retraction stemmed from a Linn statement of last month, when the assistant AG told newsmen that his original opinion of Moore's financial honesty might have been changed by investigation developments.

"I don't want to sue you for libel or slander . . . but I'm representing a client who is right, very much right," Belli said in a letter dated December 17 and released by Moore today.

" . . . if you want a mud-slinging and rotten tomato battle in Santa Cruz, let us know and Mr.

Summer Cabin Invaded by Winter Rains



Boccardo (Moore's other lawyer) and I will, though reluctantly, oblige to the best of our ability," Belli's letter stated.

Belli said Linn had "erred" in his statement to the press and should retract it "in all fairness."

Goldberg, in an afternoon-long "exploratory" visit with Assistant DA Lindsley, also talked with Supervisors Chairman Gus Wahlberg and Grand Jury Foreman Blodgett.

Scheduled to return for next Tuesday's board meeting, Goldberg will advise the DA's staff officially on civil matters and—unofficially—on criminal problems.

Taking another crack at County Clerk Kelley—whose turndown of the subpoena request last week

The summer cabin which Mrs. Olive Hoyt owns at 329 Riverview avenue, Capitola, had a decidedly un-summery appearance today as a result of an invasion by the overnight rains. The inner tube may not be needed but someone had it handy, just in case.

OREGON STORM SPLITS

Portland, Ore. (AP)—A Pacific storm split just before reaching flood-drenched Oregon today and skies in the northern part of the state began to clear.

Moore labeled "officious" — the DA said he would consult Judge Atteridge this afternoon. He expected to get the Blodgett subpoena, Moore said, and then apply for the other six.

Free Movie For Youngsters Is Set Tomorrow

The annual free movies for Santa Cruz youngsters less than 14 years old will be presented tomorrow in the Santa Cruz theater, District Manager George Atton announced today.

With the Elks lodge as co-sponsor, the children will see "So You Won't Talk" with Joe E. Brown. The program also will include cartoons and comedies.

Santa Claus will attend the show and present treats for each child guest.

damage to property in the low-land regions.

The river began its rise about 4 a.m. this morning and reached a peak of 11 feet at 10:45 a.m. just at low tide. Eleven feet is considered a critical stage.

Muddy water flowed over the banks in the low spots between Josephine street on the west side of the river near south of A. K. Salz Tannery and through the city on the east side of the river mouth.

Basements and yards were awash in the vicinity of Josephine street, Blaine, Garfield and Burnett streets.

Police reported the river dropping off late in the morning. At 11:28 a.m. the depth at Cooper street was 10.7 feet.

Flood waters moved along between five and 10 miles-per-hour. Huge trees, torn loose from the banks in the San Lorenzo valley were carried down to the sea and littered along the local beaches. The tremendous pressure of the water bursting out of the river mouth cut new openings at the island and chopped off parts of both sides.

John Sigurdson, operator of the Sunnyside courts on Burnett street reported that at 10:45 a.m. there was a foot of water in the three cabins nearest the river bank in the area of the Cooper street bridge.

Storm drains again were overtaxed early this morning. City Street Superintendent Don Bruce and his crews were on the job since 2 a.m. blocking streets and clearing clogged storm drains.

Areas hit the hardest were Soquel avenue, Center street, Dake avenue, Stanford avenue and Lincoln street.

Crews closed the east end of Dake avenue for several hours because of flooding.

Reports of heaviest flood damage came from Capitola. Waters of the China roaring down Noble gulch from the hills behind Aptos to Soquel creek, overflowed the culvert at Capitola avenue about 4:30 a.m. this morning and ran wild down the roadway bubbling into the Capitola city hall, the library and into the Capitola garage near the Southern Pacific trestle.

Two cars parked across from the garage took water up over their floorboards.

Six homes along Riverview avenue which parallels Soquel creek near Capitola avenue were invaded by two inches of water.

Mrs. Olive Hoyt, 329 Riverview, said: "About 4 a.m. I was awakened by the roar of water next to my house. Then it began coming into the kitchen and finally into the living room and dining room."

She said by eight o'clock the water receded but "my house looks like it has a dirt floor."

Capitola Police Chief Marty Bergthold said he carried two elderly bedridden ladies from homes neighboring Mrs. Hoyt's and took them to homes not affected by the flood.

Mrs. Alice Seyserth, 328 Riverview, also was awakened by the roaring water and had the startling experience of getting out of

collected on the freeway was tearing down the Soquel side freeway entrance ramp and causing heavy damage to the road.

R. C. Warriner, state highway superintendent for Santa Cruz and Santa Clara counties, said this morning that all state highways were open, but that minor slides have made them hazardous.

Rocks and slides peppered the Los Gatos-Santa Cruz highway and in places slides covered one lane. A scraper was on the job, however, and most of the slides should have been cleared this afternoon.

At noon today the county road department reported five roads closed.

A large tree has blocked the Jameson Creek road which runs from Boulder Creek to Bonny Doon.

A mushrooming slide partially stopped traffic on Summit road between the Los Gatos highway and Memory lane.

Jarvis road, off Branciforte drive, has been closed because of a fallen tree.

Another slide has blocked Zayante road about four miles from the Graham Hill road.

Still another has put the ton-Bonny Doon road out of mission.

The storm had little effect the power and phone company. E. T. Crick, PG&E chief clerk Santa Cruz, reported this morning that a tree crashed down a 4000-volt line leading out sub-station near Trout Gulch which cut power at Rio Del and Aptos from 9:03 to 9 o'clock this morning.

No phone cuts were reported.

City Manager Robert Kle received current reaction to the flood situation this morning in two phone calls. A Mrs. K. Husmann, 162 Josephine street told him, "If the flood control commission or anyone else has any doubt of the need of flood control plan they ought to come over here."

Here are the rainfall reports from weather stations around the Santa Cruz area and San Lorenzo Valley:

	24 hrs.	1955	1954
Santa Cruz	3.28	16.72	11.06
Live Oak	1.87	14.41	10.25
Cave Gulch	5.00	20.92	14.03
Ben Lomond	4.80	23.65	21.75
Boulder Creek	4.27	26.10	24.69
Empire Grade	4.06	39.85	46.80
Felton	5.24	20.39	18.21
Davenport	1.30	11.55	5.89
Capitola	1.90	14.15	9.52
Soquel	3.18	14.34	10.53
Aptos	3.10	17.24	11.96
Mt. Hermon	4.20	19.60	17.70
Watsonville	1.11		
Bonny Doon	6.00		
Scotts Valley	4.28	19.27	17.13
Ledyard Acres	1.25	12.66	8.89

BROOKLYN PLANS UNDERGROUND GARAGE

New York (AP)—The city planning commission has approved construction of a giant underground parking garage in Brooklyn, first of its kind in the city. The \$2,961,000 project, approved yesterday, would accommodate 682 automobiles. A 3.1 acre park would be built on its roof in the Brooklyn Civic center.