

Loch Lomond Has Something For Everyone

How To Get There

The fish are really jumping if first weekend catches are any indication of conditions at Loch Lomond Reservoir.

Fishing is just one of the activities offered at the reservoir under a recreation program sponsored by the Santa Cruz City Water Department that utilizes the Loch Lomond water supply reservoir and surrounding watershed land. Boating, picnicking and hiking are also offered to the public.

The recreation program opened Wednesday, April 15, and Wes Webber, director of the Santa Cruz Water Department, reports that over 3400 fish were taken out this past weekend alone. Quite a change from last year, he said, when fishing was very poor.

The reservoir is being stocked with trout by the California Department of Fish and Game and Webber expects that the fisherman can look forward to many fine days in the months ahead. All California Fish and Game laws apply at the reservoir. Fishing is permitted until sunset. The use of live minnow bait is prohibited.

Facilities will be open to the public from now through Tuesday, September 15, from 6 a.m. to sunset, and from September 15 through Sunday, November 15, from 7 a.m. to sunset.

The area is supervised and

patrolled by Ed Walker, chief recreation warden, his assistant, Walt Cacace, and seven temporary employees.

Loch Lomond Reservoir is located 10 miles north of the city in the Santa Cruz mountains. The reservoir occupies 180 acres, and in addition, the city owns 2800 acres of watershed land surrounding the reservoir.

The recreational areas are spread over 40 acres. The area varies in elevation from 970 feet at the watershed ridgeline to 580 feet at the reservoir level. Development of the area included development of several flats for parking areas and picnic areas.

The city received a grant of \$149,300 in 1963 from the state and additional funds were earmarked in a 1963 revenue bond issue for construction of the recreational facilities.

The picnic areas are provided with tables and fireplaces for public use. Each area is served by a water system and equipped with sanitary facilities.

The recreation area is also served by concession facilities at which bait, tackle, cold drinks, food and sundry items may be purchased. Row boats and boats powered by electric motors may also be rented at the concession facilities.

These two types of craft are the only type permitted in the reservoir. Those not permitted include rubber boats, canoes, kayaks, sailboats, styrofoam boats, folding boats and other craft of questionable stability. Trailer launching is also prohibited. Questions concerning boats may be directed to the water department or officials at the reservoir.

The area offers excellent hiking terrain. The watershed land is heavily forested with second-growth redwood, tan oak, madrone and Douglas Fir and is typical of the forest cover in the central coast California redwood region.

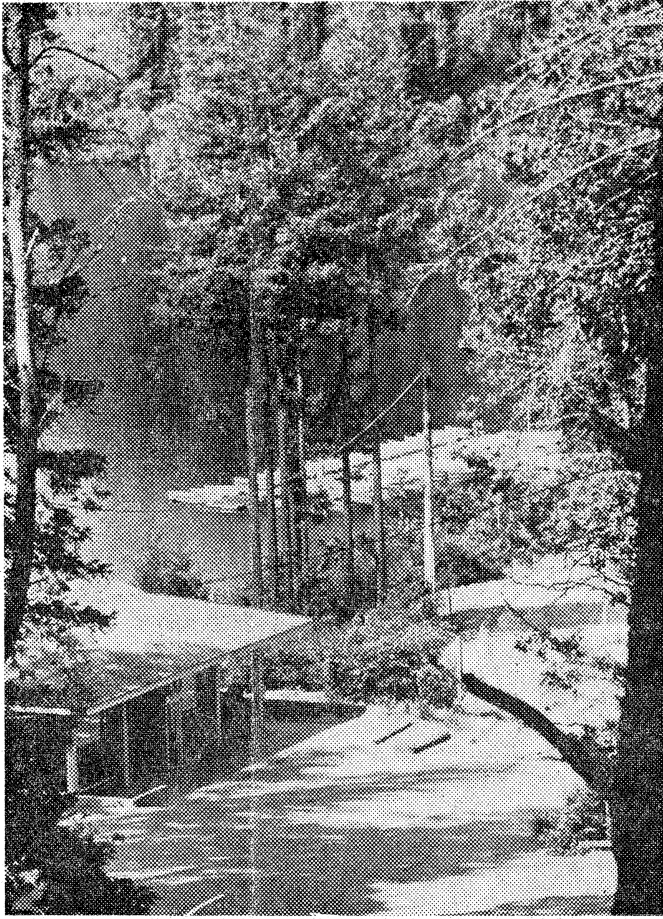
Officials of the water department caution the public that it should be aware of the primary function of the reservoir, that of supplying safe drinking water to the public. With this in mind, several public health safeguards have been instituted to protect the reservoir.

Swimming, wading or otherwise entering or contaminating the water is not permitted. Entering restricted areas or failure to make use of sanitary facilities may result in a court citation. Walker and his staff patrol the area and both he and his assistant are authorized deputies of the sheriff's department with the authority to issue citations.

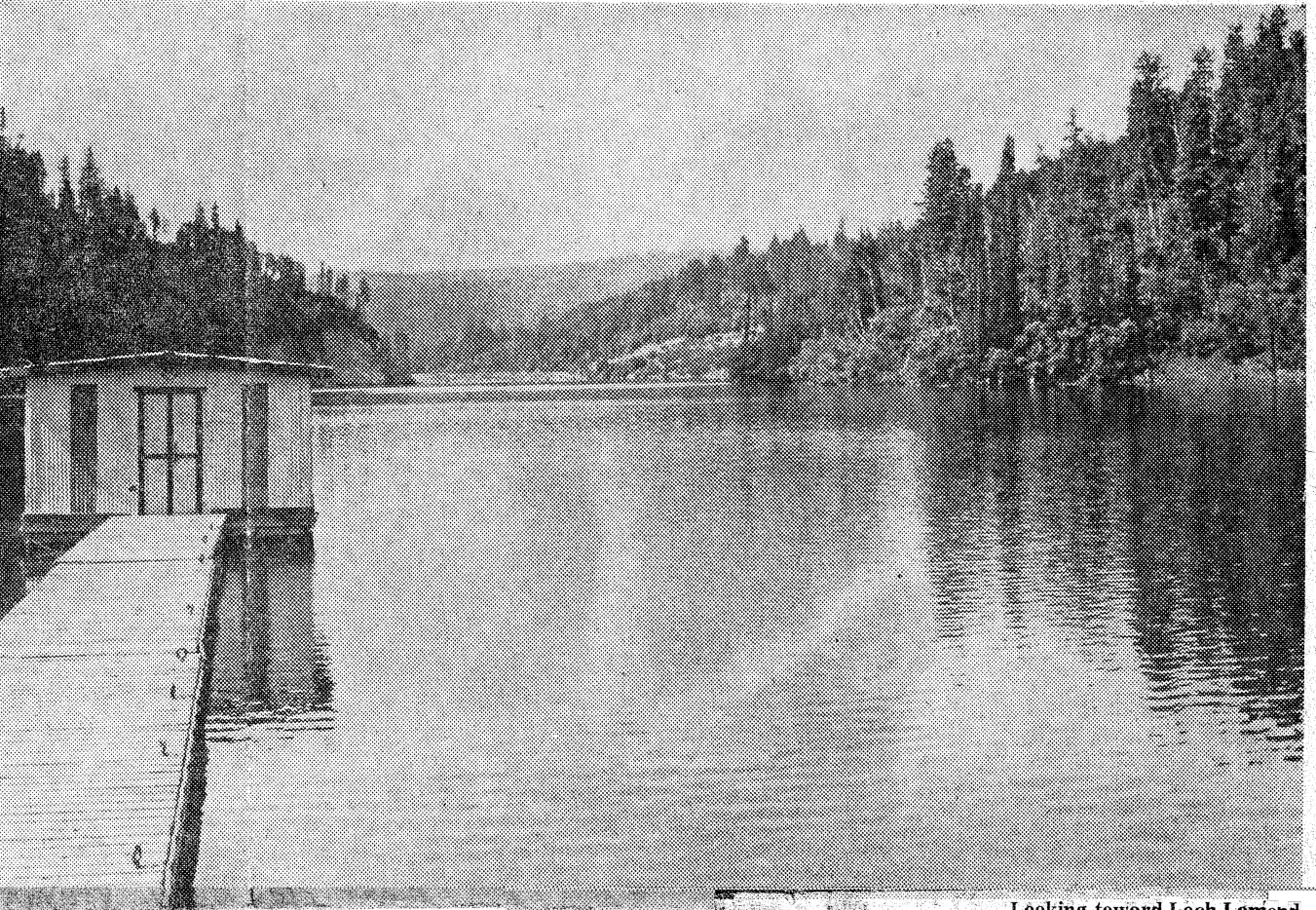
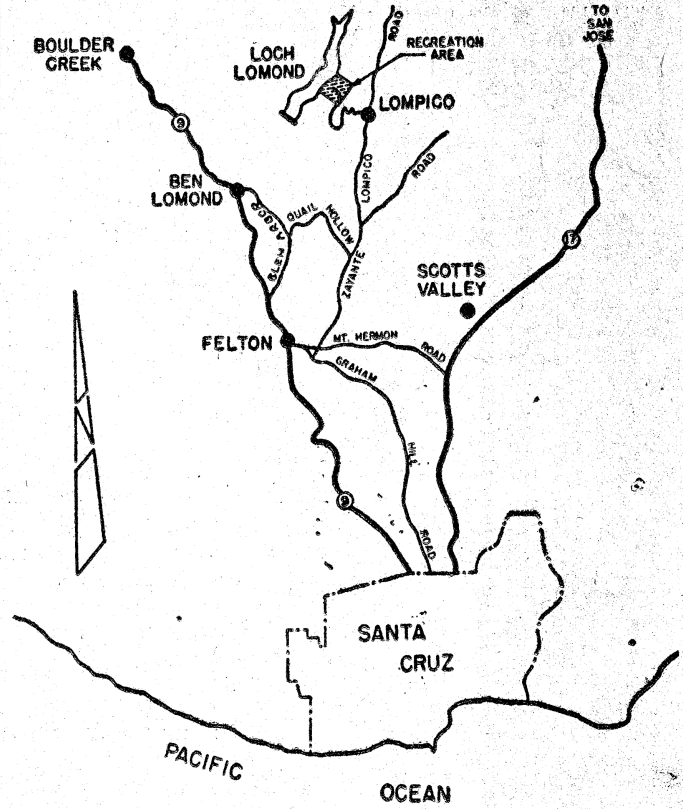
In utilizing the facilities, the public should also be aware of the danger of forest fires and the destruction that may result from one. Common sense in use of fire will go far in preventing damage to the recreational facilities.

Entrance fees for cars and pedestrians are levied for entrance to the recreational area. Organized group rates are also available. A hand launching fee for all boats is also required. Further information on these rates may be obtained from the water department office.

And contrary to any rumors that you may have heard, the Loch Ness Monster has no relatives at the Loch Lomond Reservoir.



Loch Lomond's boat rental dock



Looking toward Loch Lomond