

Don't miss the
Business to Business Expo

Wednesday, Oct. 25
Granite Office Center

Help our kids mark
Red Ribbon Week —
fight drug abuse
— See page 5

Crane truck driver dies
— See page 11

Scotts Valley BANNER

The only newspaper in the world devoted exclusively to Scotts Valley

Vol. XV, No. 37

Scotts Valley, California

Wednesday, October 18 1989

25 cents

Bulk Rate
U.S. Postage
PAID
Permit No. 12
Scotts Valley, CA

It's rock and roll - - - at 7.0

Eight houses condemned in Scotts Valley quake



By Mary Barnett
and Jim Fruitt

Eight Scotts Valley structures have been condemned because of damage in the 7.0 earthquake that hit the San Francisco Bay Area at 5:04 p.m. Tuesday, but there were no fatalities or serious injuries in the city.

In nearby San Lorenzo Valley, the Boulder Creek area suffered extensive damage to store windows and merchandise and homes in the Nina Terrace and Blue Ridge neighborhoods were damaged. Fifth District Supervisor Fred Keeley said Wednesday night, as tremors from the quake were still being felt, that several homes in Nina Terrace were destroyed and possibly up to 12 could have serious cracks. In all, almost 60 homes had been de-

announcement late Wednesday by the California Highway Patrol that mostly to chimneys. As of Wednesday afternoon, 17 mobile home coaches in Scotts Valley were reported off their foundations. Officials expected many more such reports. Seventy-five percent of the mobile homes in the county were estimated to be off their foundations, said Dinah Phillips, county public relations officer.

Severe losses were reported by several Scotts Valley markets and businesses, but they were caused by destruction of glass and bottled goods and not structural damage. Markets and stores reported runs on charcoal briquets, batteries, propane for stoves and Coleman stove lighter fluid. Nob Hill Market suffered around \$175,000 damage with about a fourth of its inventory de-

Dam and the San Lorenzo Valley. Because the quake occurred on the San Andreas Fault, and Lexington Dam is on the fault and the San Lorenzo Valley is near it but not on it, the dam is more often cited as the epicenter.

Santa Cruz and Watsonville did not escape as lightly as Scotts Valley. Five persons were confirmed dead as of Wednesday afternoon, none the two Valleys. One person was killed at Ford's Department Store on the Pacific Avenue Garden Mall, where the entire facade of the building collapsed. Another person was killed at the Santa Cruz Coffee Roasting Company, and unconfirmed reports had as many as four bodies in the rubble there. A third death occurred at a bakery in Watsonville. A freak traffic death is also believed to be earthquake re-



Seconds after the shake rolled through Scotts Valley Tuesday, aisles of Nob Hill Super Market were piled with smashed groceries. Shopkeepers in six counties had similar trouble.

Boulder Creek, the Boulder Creek Volunteer Fire Department and Santa Cruz County reported Wednesday night. The Lompico-Zayante area was also hit hard. A propane cloud caused evacuation of Big Basin State Park on Wednesday. Cathleen Treiman, 75, of Scotts Valley was killed by falling debris at a shop in Santa Cruz.

"Scotts Valley has done exceedingly well in comparison with other areas of the county," said Mayor Glennon Culwell. He was among city officials staffing an emergency command center set up in the City Council Chamber of City Hall immediately after the earthquake under the direction of City Administrator August Caires.

Probably the worst news for many Scotts Valley and San Lorenzo Valley commuters was an

manager. "We feel blessed by God to come out of it in this shape," he said.

K-Mart reported \$100,000 in losses and Coast-to-Coast Hardware around \$25,000.

At Borland International, one of Scotts Valley's major employers, the sprinkler system went off when the earthquake hit and damaged the computers.

The earthquake epicenter was placed at 10 miles northeast of Santa Cruz. The actual epicenter remained unclear late Wednesday. It was variously reported as Lexington Highway 17 to San Jose may be closed for several weeks.

In addition to the redtagged residences, which were either collapsed or off their foundations, approximately 50 other homes suffered structural damage in the quake,

lated. A motorist was killed when his car hit three horses that got loose on Highway 1 between Bay and 41st Aves. A fifth death in a nursing home is also believed to be earthquake related.

A grim-faced Santa Cruz Mayor Mardi Wormhoudt told reporters crowded around her on the steps of the County Government Center Wednesday, "The Pacific Avenue Garden Mall as we knew it ceased to exist at 5:04 p.m. Tuesday."

Wormhoudt added, "The downtown Mall suffered enormously. There are too confirmed deaths and possibly another."

For those rendered homeless by the quake, two shelters have opened in Scotts Valley: at the Senior Center, 370 Kings Village Road, and the Mt. Hermon Conference Center. Food is offered at the Se-

please see next page



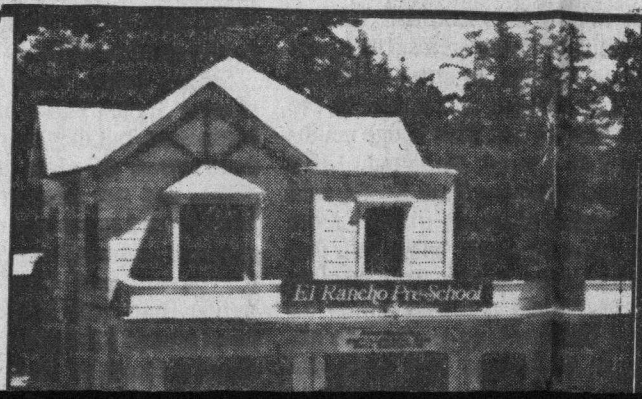
Photo by Katherine Bowers

Canyons of Lompico counted several smashed houses and Lompico Road was covered with boulders Tuesday night.

Cont.' on back of this page



Boulder Creek's downtown stretch was hard hit by the quake with almost all stores suffering broken windows and merchandise.



► Earthquake from page one

nior Center but not at Mt. Hermon.

Scotts Valley schools will be closed until Monday. All schools in the city were checked Wednesday morning by Fred Miles, a structural engineer who donated his time. He found all of them safe for occupancy except possibly one building at Baymonte School. Declared safe were Vine Hill, Brook Knoll and Scotts Valley Middle School.

Power was restored Wednesday to most of Scotts Valley as well as to most other areas of Santa Cruz County with pocketed left powerless in Aptos, Felton and Boulder Creek. Power came from the Metcalf Station in Santa Clara County, said Greg Rydquist of Pacific Gas & Electric Co. Moss Landing plant power will not be available for the next few days, he said.

All streets in Scotts Valley are open for traffic, said Public Works Director Robert J. Rockett. However, Bean Creek Road is closed at the 600 block, about 200 feet beyond the city limits, and is expected to be closed for some time. A substantial portion of the road is gone, covered or subsided, Rockett said. Also, one lane was closed late Wednesday on the Carbonero Way Bridge, and on Whispering Pines from 715 to Blueberry Court.

At the command center, highways listed as open were Highway 9 to within two miles of Boulder Creek, and Highway 1 from Santa Cruz north to Half Moon Bay. Highway 17 to Los Gatos, as noted earlier, is closed.

Most stores remained open in Scotts Valley, including groceries, gas stations, restaurants and even ice cream parlors.

Most of the houses damaged were relatively new, expensive homes, Culwell said. One \$750,000 home,

which he described as "one of the finest homes in Scotts Valley", was sheared off its foundation. Also, said the mayor, the former home of Apple Computer co-founder Steve Wozniak on Crescent Drive, one of the city's finest homes, has been lost.

"It's not the older homes that have suffered," Culwell said.

The city is inspecting residences on request, said Charlene Ashfield, administrative secretary in charge of public relations for the emergency. In the inspections, several homes have been redtagged.

Water in Scotts Valley was 100 percent available and usable, from both the Scotts Valley and San Lorenzo Valley districts, Rockett said. The one major line break, near Monte Valley Mobile Home Park, was being repaired late Wednesday.

Only three earthquake-related injuries were reported in Scotts Valley. A resident of one of the col-

lapsed houses suffered a broken leg. In Safeway, a woman was cut by glass. A fishtank fell in another instance and injured a woman's leg. None of the injuries were described as serious.

Immediately following the quake the city set up the emergency command center at City Hall. Latest information was entered on large sheets of paper, which were then posted on the walls. As soon as an emergency was reported, one or more employees was dispatched to handle it.

For example, on Wednesday afternoon a report came in of sanitary effluent at Laurel Bridge. An employee was dispatched to repair it. There was a report of a waste break at Glen Canyon and Carbonero Creek Roads. The city wastewater staff promptly responded. Rockett said it would be fixed within the hour.

Throughout the county, six shelters were opened by the Red Cross with a capacity of 1000.



Photos by Jim Fruitt

► Cultural from page one

historical societies, museums and heritage groups, as well as members of groups for licensed architects, urban planners and related professionals.

Members are appointed to serve for three years, and may be reappointed. In the event of a vacancy occurring during the term of a member, the City Council makes an interim appointment to fill the unexpired term.

Long lines formed Wednesday for supplies at markets in Scotts Valley and San Lorenzo Valley. Gas stations ran out of supply or closed in order to have enough for emergency vehicles.