

# Lighthouse open to the public on weekends

SANTA CRUZ — A new chapter in the history of the Santa Cruz Lighthouse has begun with the opening of the historic structure to the public on weekends.

The lighthouse will be open from noon to 5 p.m. Saturdays and Sundays.

The history of the Lighthouse began in 1867 when at the request of merchants and shipping concerns, the U.S. Congress appropriated

money for construction of a lighthouse to guide ships in and out of the then-busy seaport of Santa Cruz.

Schooners and steamers regularly docked at local wharves to pickup loads of lumber and lime.

This first lighthouse, a six-room structure was built in 1869 and lit Jan. 1, 1890.

Located about 100 feet seaward of the present

lighthouse, the original was home for one keeper and family. After 10 years of erosion, the white lighthouse was moved back to keep it from falling into the ocean.

A kerosene lamp was used as the light source until 1918 when the lighthouse was converted to electricity.

By the 1940s, automatic timers replaced the light-

house keeper who had faithfully watched over the signal for some 70 years. Later, the U.S. Coast Guard dismantled the old lighthouse and replaced it with an automatic light on a framework tower.

A movement to build a new lighthouse began in 1967 with Mr. and Mrs. Chuck Abbott. They funded a new lighthouse at the point in memory of their son, Mark,

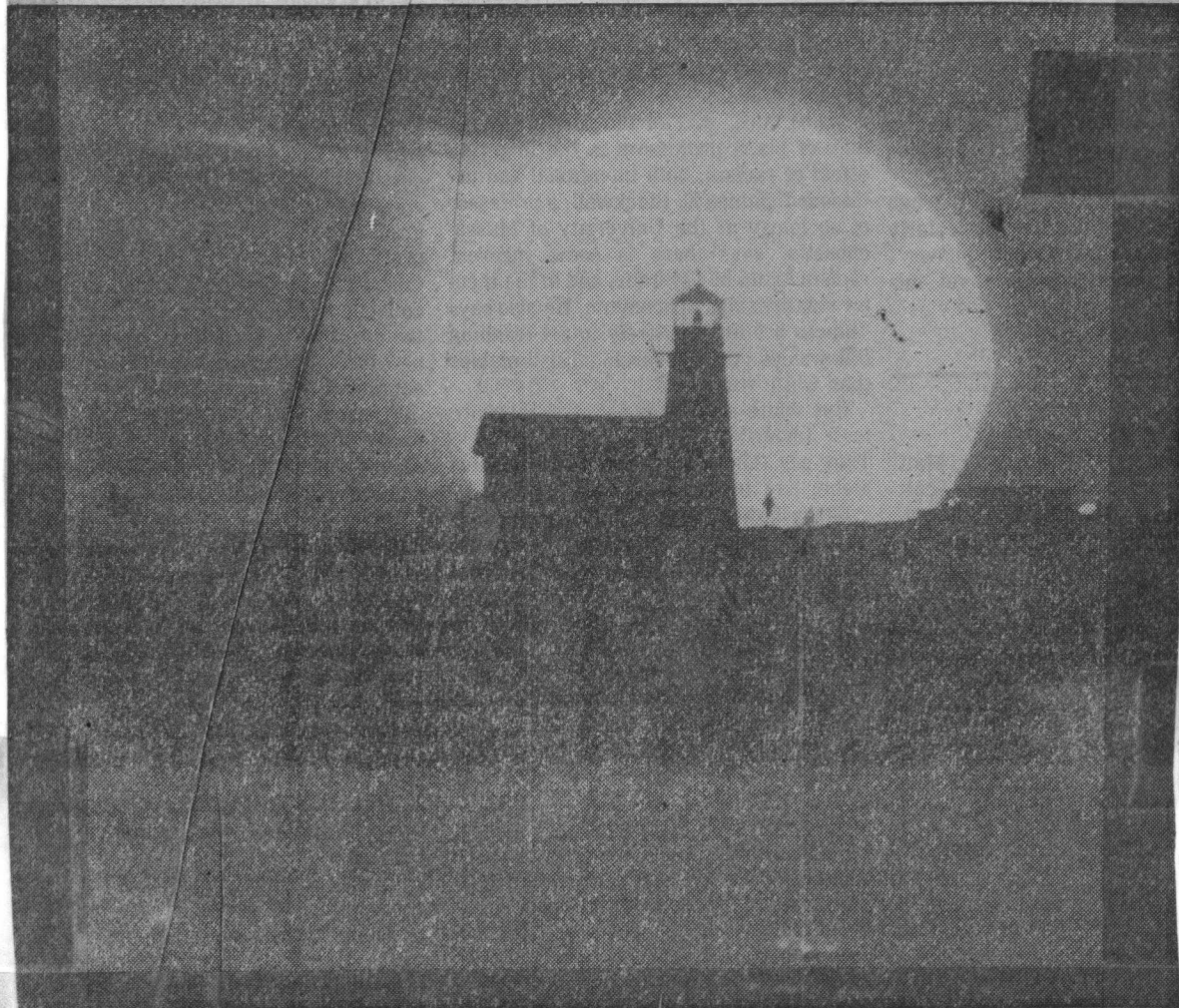
who died in a surfing accident near the point.

The Coast Guard maintains the light as an official aid to navigation.

Visitors will find an information source at the lighthouse on its history, shipwrecks and paintings of other U.S. lighthouses.

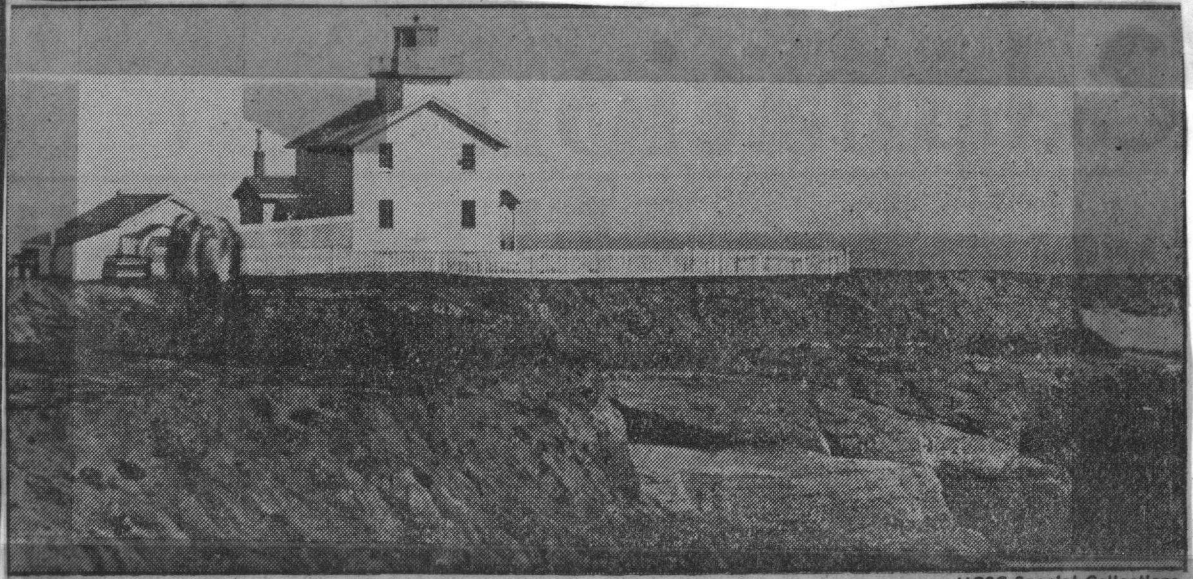
A display called "Migration" features 50 color photographs by Frans Lanting, along with text panels, models and animal specimens. The latter includes the monarch butterfly, California gray whale, sanderlings and the Santa Cruz long-toed salamander.

REFERENCE



The lighthouse today

Dan Coyro/Sentinel



Original lighthouse in the 1870s

UCSC Special Collections

SANTA CRUZ SENTINEL  
June 24, 1984