

RR SC Water Crisis

~~stocks~~

How Much Water Are You Using?

By BILL NEUBAUER
Sentinel Staff Writer

The city water department has launched a massive campaign to teach people how to read their meters and to conserve water throughout the water rationing period voted by the Santa Cruz City Council Tuesday.

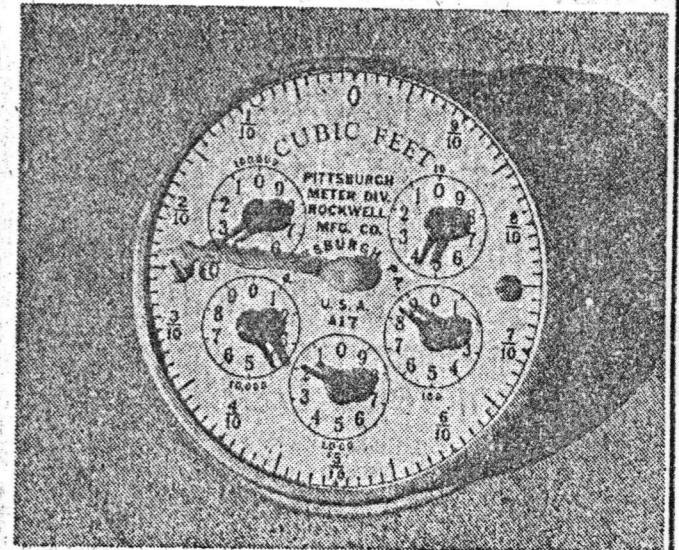
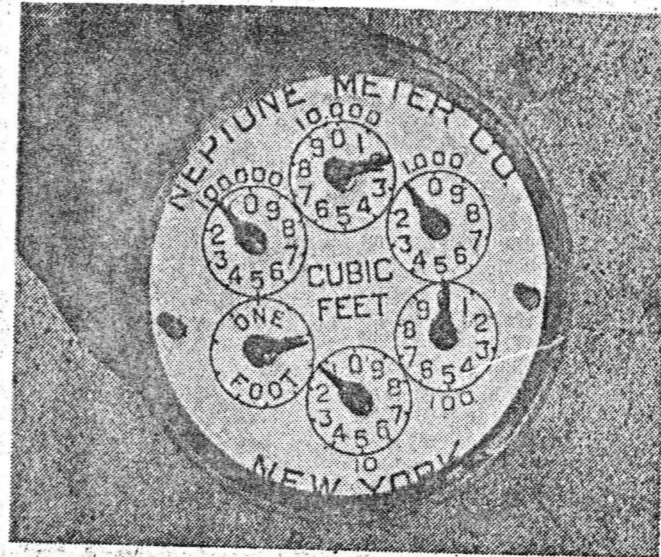
Information packets are available without cost at the city hall, the Santa Cruz Main Library, the Santa Cruz Sentinel, the main post office, Pacific Telephone, County Bank branches and the city water department.

Packets will go out to all customers by mail in the next two to three weeks, according to Traci Bliss, the city's water conservation coordinator.

Throughout the spring and summer other materials will be developed to help ease problems which may arise because of the rationing, Bliss said.

The city water department was deluged with hundreds of telephone calls Wednesday, Bliss said, after the rationing program was announced.

SEE BACK PAGE



Weather

Fair Through Friday
With Gusty Winds,
Occasional High Clouds

Details Page 2

Santa Cruz Sentinel

Thursday
Afternoon

121st Year No. 51

Thursday, March 3, 1977

Santa Cruz, Calif. 95060

54 Pages 15c

How Much Water Are You Using?

FROM PAGE 1

Two major questions were asked, she said: how to read the meters, and how to know how much water a person is using during ordinary household procedures.

Here's the basic information on reading meters, depending upon which of the city's three types that you have at your residence.

The first meter at the right is read like an automobile speedometer, according to Clay Nelson, the water department's customer service supervisor. When the hand on the circular dial has made a complete rotation it indicates that one cubic foot (7½ gallons equals a cubic foot) has been used. The change will then appear in the last column in the digit row. Therefore, if you waste water by taking a normal, 25-gallon shower, the reading here would go to 108712, or thereabouts.

The center meter is read clockwise, beginning with the circular dial numbered 100,000. Each time you use a cubic foot of water the hand on the one-foot dial will rotate once. When you have used 10 cubic feet it will be shown on the 10-cubic-foot scale, and so on. When a pointer is between two figures, read the lower figure. If a pointer seems directly on a figure, read the lower figure unless the pointer on the next lower dial has passed zero. The correct way to read the center meter dials as shown here is 121011. When the one foot pointer has completed the cycle the meter will read 121012.

The meter at far right is read the same way as the one in the center, but the hand marking each cubic foot of use is that big one that goes around the full dial.

All water meters and bills are calculated in hundreds of cubic feet. If the consumption on your water bill reads 10, you have used 7480 gallons, for there are 748 gallons in 100 cubic feet.

There's a rough-and-ready way to estimate water use, and you should use it to save innumerable trips to your water meter. But don't bother to memorize the information on this below, because you will get it in the next couple of weeks from the water department.

Still, normal use and conservation use are as follows for household procedures:

Shower, water running, 25 gallons. Conservation use: wet down, soap up, rinse off, 4 gallons.

Brushing, tap running, 10 gallons. Conservation use: wet

brush, rinse briefly, one-half gallon.

Tub Bath, full, 36 gallons. Conservation use: minimal water level, 10 to 12 gallons.

Shaving, tap running, 20 gallons. Conservation use: fill basin, 1 gallon.

Dishwashing, tap running, 30 gallons. Conservation use: wash and rinse in dishpans or sink, 5 gallons.

Automatic Dishwasher, full cycle, 16 gallons. Conservation use: short cycle, 7 gallons.

Washing Hands, tap running, 2 gallons. Conservation use: fill basin, 1 gallon.

Toilet Flushing, depending on tank size, 5 to 7 gallons. Conservation use: with displacement bottles in tank, 4 to 6 gallons.

Washing Machine, full cycle,

top water level, 60 gallons. Conservation use: short cycle, minimal water level, 27 gallons.

Outdoor watering, average hose, 10 gallons per minute. Conservation use: use hand, turn off nozzle.

Leaky Faucets, wastes hundreds of gallons daily. Conservation use: check all faucet washers.

Your new ration of water per day is based upon a sliding scale, depending upon how many persons are in your house. It all averages out to 80 gallons per day per person, meaning you will have little to use, let alone waste.

Restaurants are already conserving by mounting cards saying they will serve water only if requested.

King Slaying Probe In Doubt

SEE BACK PAGE

House rejected Sprague's appeal for a two-year, \$6.5-million-a-year budget and put the committee on an 84,000-a-month budget which runs out at the end of this month. Gonzalez claimed Sprague refused to back his efforts to stay within this budget.

Democratic leader Jim Wright acknowledged to newsmen that his compromise efforts have been directed at keeping both Gonzalez and Sprague on the committee. Wright said today, however, "I must say I probably engaged in a miscalculation. His (Gonzalez') feelings are very deep, very intense."

Gonzalez remained in Texas reportedly suffering from flu and did not attend the meeting.

Both O'Neill and Wright said Gonzalez has not responded to their repeated efforts to talk to him by telephone.

Wright said Gonzalez was unable to sleep several nights during the feud with Sprague — "perhaps because of tension and worry" — and said that might have reduced his resistance and brought on the flu and following complications.

Wright and the committee's next ranking Democrat, Richardson Preyer of North Carolina, announced that one decision made at the morning meeting was that the committee will meet next Monday whether Gonzalez returns to Washington by then as expected or not.

They said the meeting would deal with evidence in the King investigation and a budget, possibly including staff cuts, but will not deal with "personalities," an apparent reference to the Gonzalez-Sprague fight.

Wright had said Wednesday he believes that if Gonzalez insists on resigning the House will kill the whole investigation.

Italian Plane Crash Kills 44

PISA, Italy (AP) — An Italian air force C130 transport plane carrying 38 naval cadets and six crewmen crashed Thursday in the mountains north of this central Italian city, killing all aboard, the Defense Ministry said.

The plane was taking the teen-aged cadets, all in their first year at the Leghorn Naval Academy, on their initial training flight when it crashed against Mt. Serra, shortly after take off from Pisa's San Giusto Airport.

Leghorn is the Italian equivalent of Annapolis.

The flight was scheduled to last an hour, over Tuscany and the Tyrrhenian Sea, before returning to Pisa. The plane crashed against the slopes of Mt. Serra at an altitude of about 2,800 feet, military officials said. Bodies were spread over a half-mile range.