

BRIDGES Soquel footbridge now spans creek

By DENISE FRANKLIN

Sentinel staff writer

10-12-91

SOQUEL — Soon Soquel residents will be able to again walk from their neighborhoods across a footbridge to Soquel Village.

Granite Construction Co. set a new footbridge in place Friday across Soquel Creek at the intersection of East Walnut and Main streets. The Live Oak/Soquel Redevelopment Agency project replaces the former Walnut Street bridge.

The footbridge, according to Sue Gilchrist of the Redevelopment Agency, is part of an overall project to construct walkways linking neighborhoods east of Soquel Village with the downtown area.

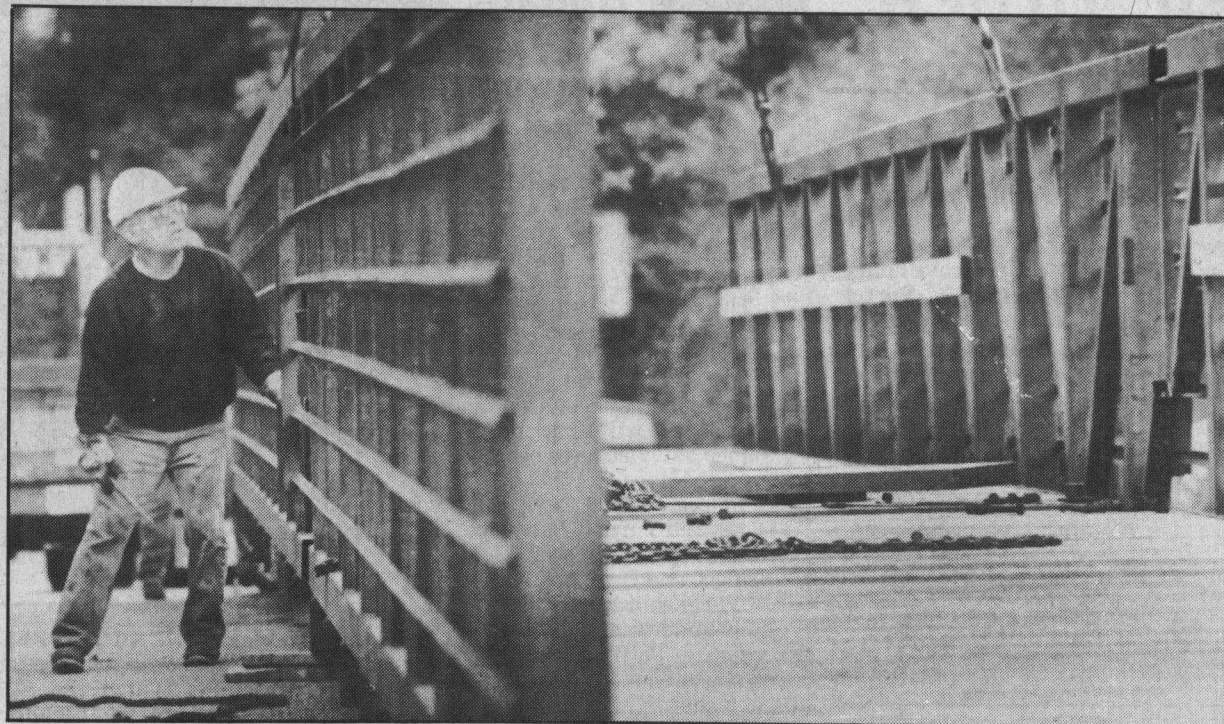
"The footbridge is also a big

benefit to Soquel Elementary School," Gilchrist said. "It will be a way for kids to walk across the creek to school."

Parents who drive their kids to school can also drop their them off at the Main Street side of the bridge to avoid the heavy traffic along Soquel Drive and Porter Streets, Gilchrist added.

The \$750,000 redevelopment project includes sidewalks along one side of Main Street, along one side of East Walnut Street and along both sides of Soquel Drive east of the village.

The Redevelopment Agency also is constructing a parking lot on Soquel Drive west of the Porter Street intersection to alleviate parking problems in the village.



Worker aligns section of bridge that crosses creek to Soquel Elementary School playground.

Bill Lovejoy/Sentinel