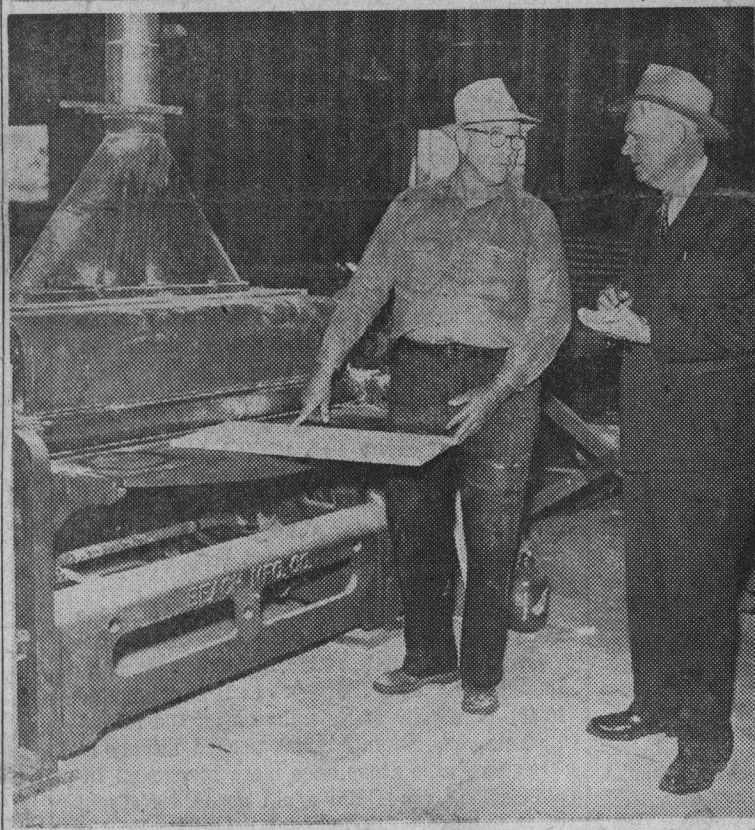
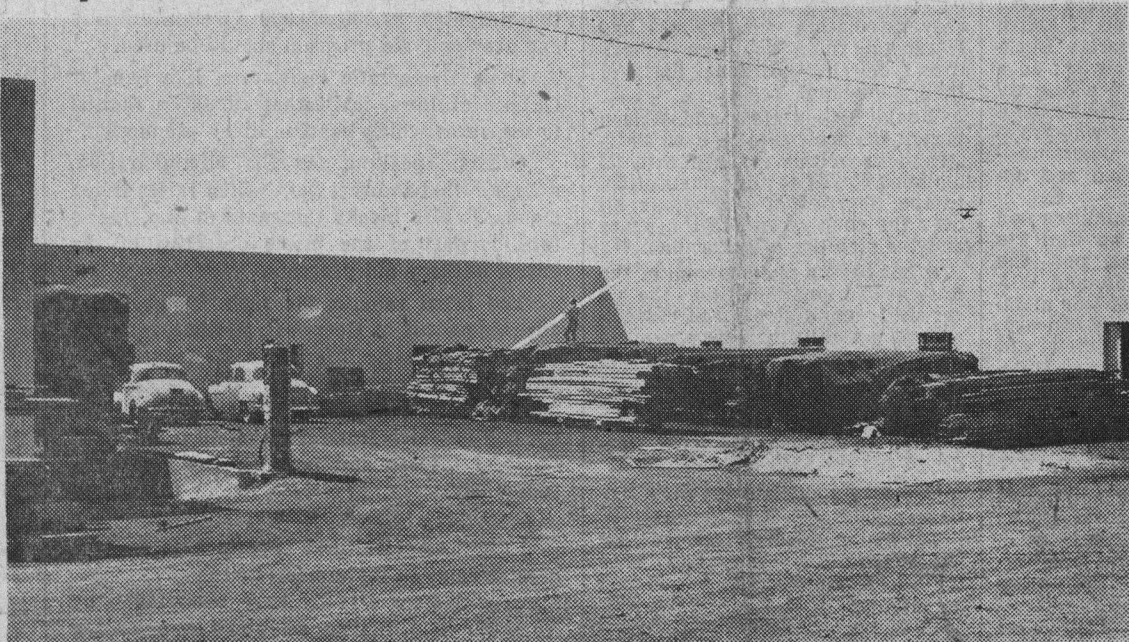


Maywood Manufacturing Plant In Full Operation In New Live Oak Building

Maywood Manufacturing Co. Operating In New Building



Judge Atteridge

Charles Toshekian

Furniture Company Has 21 Employees

Just 45 days after the ground was levelled, the Maywood Manufacturing company is now in full operation in its new building at 1115 Thompson avenue in the Live Oak district. This feat was accomplished under the direct supervision of Everett W. Eyer, senior partner of the Maywood company.

Eyer originally designed and cut the unfinished furniture manufactured by Maywood in his own plant in Los Angeles.

After moving to Santa Cruz several years ago, Eyer interested George Morden and his partners, R. M. Booker and Mannis Dick in going into the same line of business in this area.

Five acres of land were purchased from Albert Knauer for the site of the new structure, which has 13,200 square feet of space under roof.

A spur track will be put in soon leading to the south wing of the structure from the Southern Pacific tracks which run between Santa Cruz and Watsonville.

With the purchase of a large drum sander, Maywood now has a fully-equipped shop which occupies one wing of the new building. Lumber cut there is under Eyer's supervision.

Due to the steady increase in its wholesale furniture manufacturing business, the Maywood company is gradually enlarging its crew of workmen. At the beginning of this week, it had 21 employees and more are expected to be added shortly.

Between 70 and 80 items of furniture are manufactured at the plant and the entire output is shipped to California retail outlets.

Eyer, who came to this area from

Boys' 8-oz. Khaki Twill

PANTS

ZIPPERED, 6-16

\$2.85

LAM'S CLOTHING & VARIETY
2313 MISSION ST.

SOCAL
SOQUEL

STARTS T

THIS IS PIER ANGE

—in her first MGM picture

Try **Hollywood** BREAD TODAY



A tender... yet intimate and revealing drama of a G. I. and his lovely war bride... who is hated and scorned by her husband's American parents

T M-G-M