

Covered Bridge On Medal

The Santa Cruz Coin Club again has had a medal struck for their upcoming coin show on October 28.

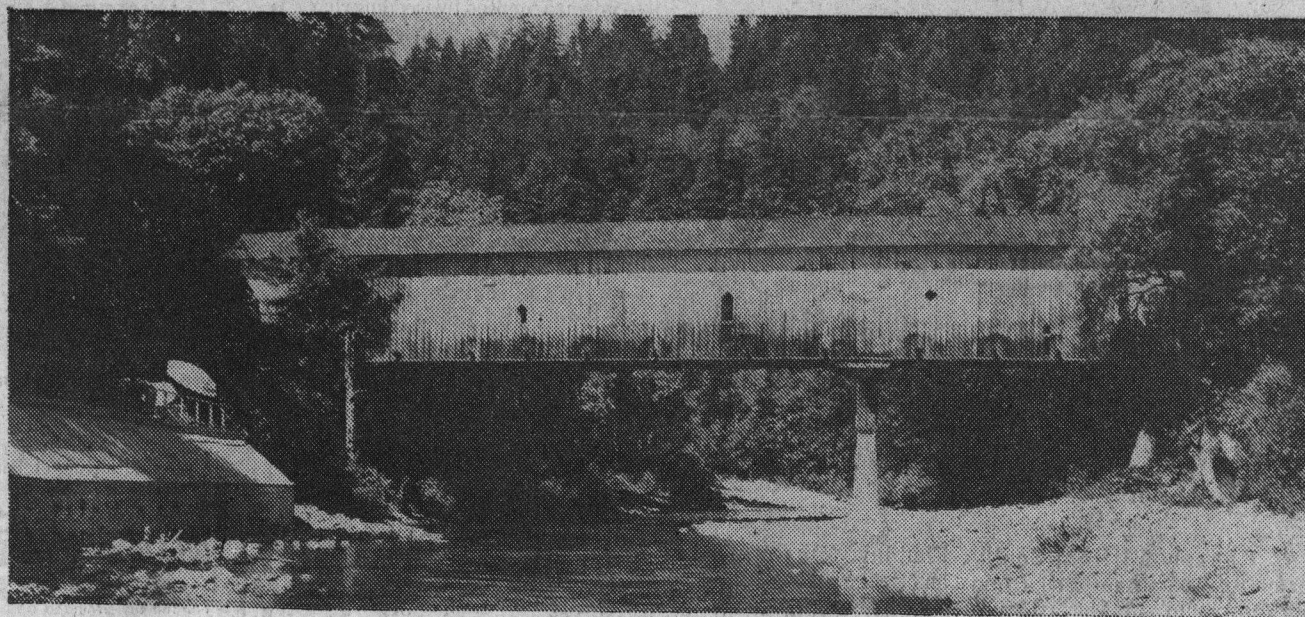
This year's design features another Santa Cruz County landmark, the Paradise Park Covered Bridge which spans the San Lorenzo River.

The bridge is unique in many ways: it is the only one in the county still in use; its siding contains the only remaining examples of the once popular "diamond windows;" according to Author Kramer Adams, it is the only western span to be equipped with fire hoses at both ends and one of the three with electric lights. It once bore a narrow-gauge railroad and traffic from California Powder Works as well as the first pulp mill in the west.

Today the covered bridge serves the residents of the Paradise Park Masonic Association. The bridge, built in 1872, was so well constructed that only the roof and floor decking have had to be replaced. There were thousands of covered bridges built in early California days with only 11 still remaining, three of them in Santa Cruz County. Others are Felton covered bridge, built in 1892 and the tallest in the nation, and DeLaveaga, now in DeLaveaga Park, which was built in 1893.

The medals, of antiqued golden bronze, are available from members of the Santa Cruz Coin Club at \$1 each. Orders may be sent to Santa Cruz Coin Club Medal Chairman, PO Box 991, Santa Cruz. Enclose a self-addressed stamped envelope.

The public is invited to the Coin Club's eighth annual coin show October 28 at Holiday Inn.



Paradise Park Covered Bridge

