

Hospitals

Santa Cruz Library
224 Church St.
Santa Cruz, Calif.

Hospital to receive first patients December 26

† Dominican Sisters new hospital to be dedicated Sunday, December 17 †

Santa Cruz Dominican Sisters will dedicate their new 150-bed hospital Sunday, December 17. The two-story New Dominican Santa Cruz hospital replaces the 28-bed Sisters Hospital and the present 51-bed Dominican Santa Cruz hospital, both located and operated by the Dominican Sisters in Santa Cruz.

The 150-bed hospital is a general hospital designed as a community health center and will be completed and ready to serve patients on Tuesday, December 26, some 18 months after the beginning of construction.

To highlight the completion the community is invited to an open house to be held at the hospital Saturday, December 16. Continuous tours of the buildings, located at 3150 Paul Sweet road, will be held Saturday afternoon, from 2 to 8 p.m. Hospital auxiliary members and hospital staff will serve as hosts for direction and information concerning the new facilities.

A series of previews throughout the week will mark the opening of the hospital. A special tour will be held Wednesday for hospital employees and their families. Thursday hospital administrators from throughout the state will gather to view the structure. An invitational tour for contributors and donors is planned for Friday evening.

The Dominican Order is a congregation of 2,600 sisters staffing a wide variety of schools, colleges, homes for the aged, and hospitals in the United States, the Caribbean area and South America. Their Mother-house is located in Adrian, Michigan and Mother Mary Genevieve, O.P. is the Mother General. They have raised locally more than \$800,000 of the \$1 million required for the new \$5.5 million institution, and the new hospital is being built without federal or state assistance.

New Dominican Santa Cruz hospital will be the newest, largest and most modern medical facility in Santa Cruz county when completed. Located on a 17-acre site just north of highway 1 at the Soquel avenue interchange, the hospital was designed by Rex Whitaker Allen and Associates, San Francisco architectural firm nationally noted for its work with hospitals.

The architects have also prepared a master plan for New Dominican Santa Cruz hospital which will allow it to expand to 250 beds as the Santa Cruz community grows and as additional beds and health services are required.

One of the major design features of the hospital provides for a seven-foot high space between the two floors containing most of the electronic control wiring, pneumatic tubes, climate control equipment, pipes and other facilities vital to the operation of a medical center.

Called a "systems floor," this new concept has been responsible for saving at least several months in the construction time of the hospital, according to the general contractors, Carl N. Swenson, Inc. of San Jose. It allows the electricians, plumbers, sheet metalmen and other construction workers to do their

Dedication Program

Sunday, December 17, 1 p.m.

Band Music

Presentation of Colors

National Anthem

Invocation by Rabbi Maurice A. Lazowick

Hymn

Special Greetings

Dr. Georges McCormick,
Chief of Staff
Dominican Santa Cruz Hospital

Dr. Robert W. Jones,
Chief of Staff
Sisters Hospital

Mother Mary Genevieve, O.P.,
Mother General
Adrian Dominican Sisters

Very Reverend Monsignor Timothy E. O'Brien,
President
Catholic Hospital Association

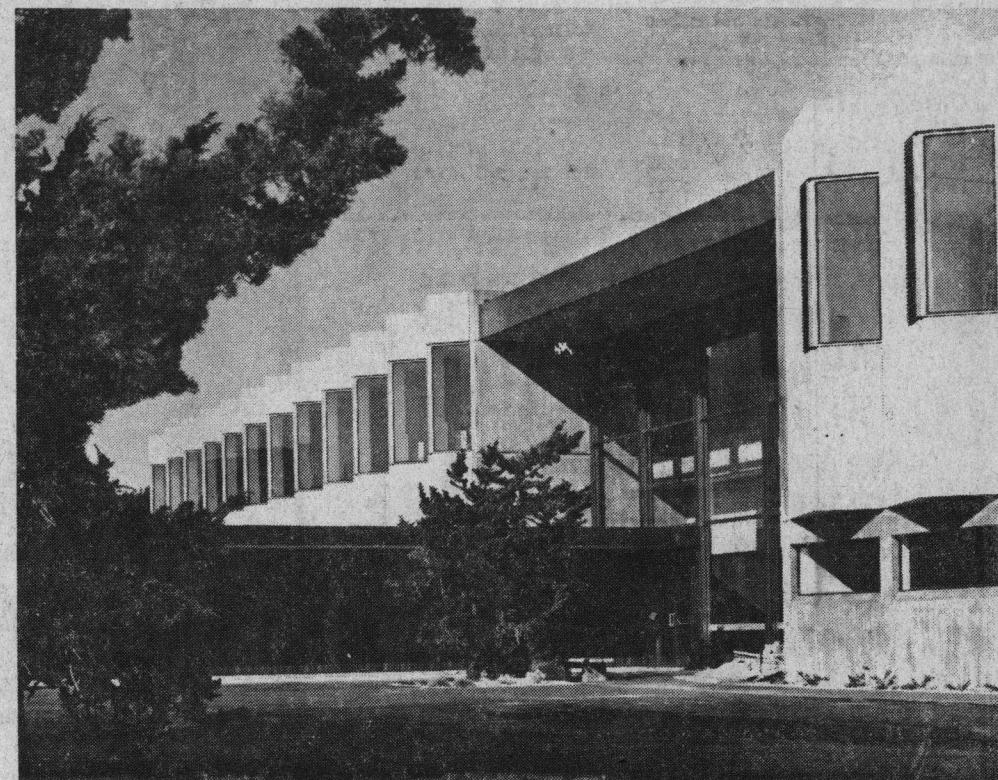
Right Reverend Monsignor William MacLoughlin
"Welcome to Bishop"

Blessing of Hospital

His Excellency Most Reverend Harry A. Clinch

422nd Military Police Company
of Santa Cruz

Commentary by Holy Cross High School Chorale, who will also be presenting the national anthem and hymn. Keith Shaffer, president of the Dominican Santa Cruz Hospital Advisory Board will preside over the dedication ceremonies. A tour of the hospital will follow.



County News

Devoted to the Best Interest of Beautiful Santa Cruz County

County News
P. O. Box 327
Aptos, California
RETURN REQUESTED

THIRD CLASS
U.S. POSTAGE
PAID
Permit No. 4
Aptos, Calif.

(Continued on Page 2)

Dominican Sisters new hospital to be dedicated Sunday, December 17

(Continued from Page 1)

jobs in an upright area and without interference from each other.

The "systems floor" in New Dominican Santa Cruz is being used throughout a hospital for the first time in this country, according to the architects, and could very well revolutionize aspects of hospital construction.

New Dominican Santa Cruz hospital will have 86 medical-surgical beds, 14 maternity beds, 13 beds in a pediatric area, eight beds in an intensive Care Unit and four beds in an Intensive Coronary Care Unit for emergencies involving heart ailments. In addition, there will be a private 25-bed psychiatric wing, the first of its kind in the area.

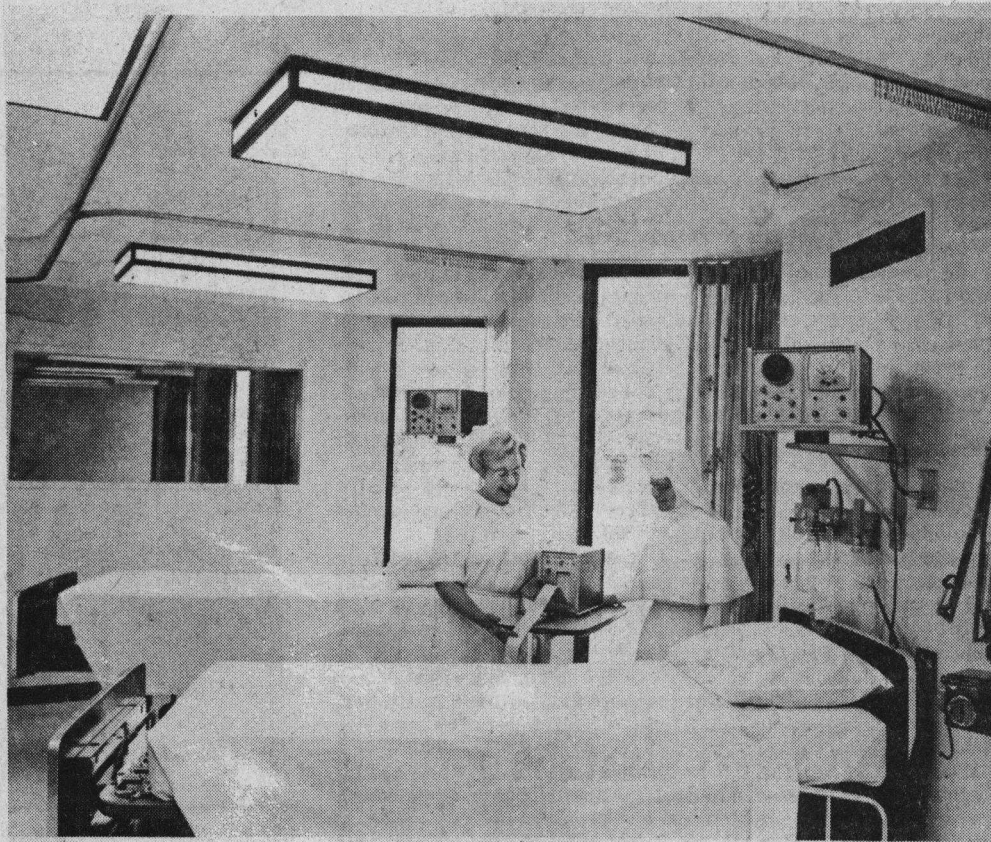
Other facilities incorporated into the New Dominican Santa Cruz hospital include a surgical suite with five operating rooms and a cystoscopy room; a delivery suite with two delivery rooms, three labor rooms and a recovery room; two radiographic rooms and one room for special procedures including arteriograms, pneumoencephalograms and cardiac diagnostic procedures; facilities for isotope studies; a pathology laboratory; a physiotherapy department and an emergency department combined with an out-patient area.

The new hospital will have 16 private rooms and 63 semi-private rooms that are convertible to single-patient use by means of a "duo-room" plan designed by Rex Whitaker Allen and Associates.

With this "duo-room" concept each semi-private patient will have his own lavatory while sharing the toilet; a sound-deadening screen can be drawn closed for privacy and to give the appearance of a single room to each patient.

Connected to New Dominican Santa Cruz hospital will be an unusual chapel with a soaring interior that creates a religious feeling, for use by persons of all faiths for prayer or meditation.

Administrator for the New Dominican Santa Cruz hospital will be Sister Mary Carolyn, O.P., who estimates the number of employees for the hospital will be about 300, double the current number of workers in both hospitals operated by the Dominican Sisters.



WELL EQUIPPED -- The latest in medical equipment has been procured by the hospital and installed in the various sections of the hospital where it will do the most good, as can be seen (above) in the hospital's Coronary Care Unit, which is equipped with complete heart monitoring equipment. The unit can serve four patients at a time, providing highly specialized 24-hour nursing service.