

12/2/82

express

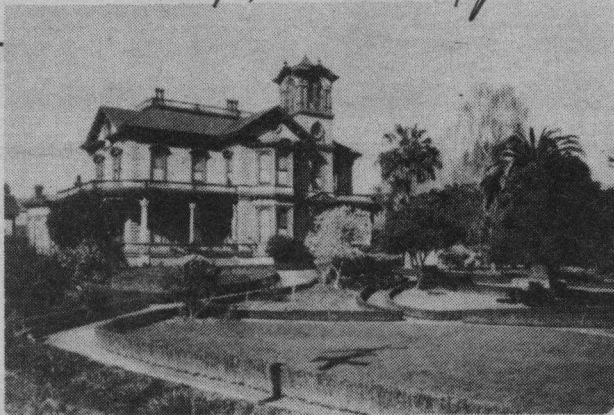


PHOTO: CAROLYN SWIFT COLLECTION

THE GREAT F.A. HIHN MANSION. The Santa Cruz **Sentinel**, along with most citizens, once said this was one of the finest homes in the state. It was torn down in 1937 (according to the Downtown Neighbors calendar) and we now have the City Hall in its place. You figure it out.

them, and when she began doing her pastels of some wildly beautiful images, she sold out every one of her works in the